

Bid Date -

**** ESTIMATING BAR LIST ****

LINE	LA	EP	A/D	STRUCTURE	MULT	REQ	CODE	+	X	QTY	SZ/GR	LENGTH	B	COMMENT	LINE LB
1				CONCRETE & CMU WALL											
2															
3				SANFORD WATER FILTRATION FACILITY											
4				-											
5															
6				ARCHITECT: -											
7				PHONE :-											
8				FAX :-											
9															
10				STRUCTURE: -											
11				PHONE :-											
12				FAX :-											
13															
14				REBAR:											
15				1.ALL REINFORCING BARS SHALL BE DEFORMED											
16				ASTM 615 GRADE 60											
17				2.DOMESTIC OR NON-DOMESTIC REBARS											
18															
19				ADDENDUMS: NONE											
20															
21				DRAWING USED FOR ESTIMATE:											
22				1.A01 TO A3801 DATED ON (07/18/23)											
23				2.C001 TO CD8 DATED ON (07/14/23)											
24				3.E001 TO ED4 DATED ON (07/14/23)											
25				4.FP700 TO FPD1 DATED ON (07/14/23)											
26				5.G01.1 TO G981 DATED ON (07/14/23)											
27				6.H1 TO HD2 DATED ON (07/14/23)											
28				7.I001 TO ID3 DATED ON (07/14/23)											
29				8.M50 TO MD07 DATED ON (07/14/23)											
30				9.P1 TO PD1 DATED ON (07/14/23)											
31				10.S1 TO SD10 DATED ON (07/14/23)											



ORS

Bid Date -

** ESTIMATING BAR LIST **

LINE	LA	EP	A/D	STRUCTURE	MULT	REQ	CODE	+	X	QTY	SZ/GR	LENGTH	B	COMMENT	LINE LB
63	ASSUMPTIONS: NONE														
64															
65	NOTES:														
66	1.REBAR ACCESSORIES: AS PER STANDARD PRACTICE														
67															
68	WFF FLOW				WFF FLOW METER & RAW WATER CHEMICAL VAULT (S60)										
69	>CONC. SLAB				CONCRETE SLAB										
70	REF. SECTION(A,B&C/S62)														
71	BOTTOM SLAB														
72	16" THICK SLAB														
73	AREA = 470 SQ.FT														
74									2	45	#7	40-00		#7 @8" EW T&B	7358
75						2			2	8	#7	8-06	H	#7 @8" BENT EW BOT	556
76						2			2	8	#7	6-04		#7 @8" EW TOP	414
77										36	#4	6-04	L	#4 @48" STANDEE	152
78									2	164	#7	7-09	H	#7 @8" DWL EF	5196
79															
80	TOP SLAB														
81	12" THICK SLAB														
82	AREA = 285 SQ.FT														
83									2	26	#5	40-00		#5 @8" EW T&B	2169
84										22	#4	5-08	L	#4 @48" STANDEE	83
85															
86	EQUIPMENT PAD														
87	REF. SHEET(S61 & SD3)														
88	AREA = 30 SQ.FT														
89									2	4	#5	40-00		#5 @8" EW T&B	334
90										5	#4	6-00	L	#4 @48" STANDEE	20
91															
92	>CONC. WALL				CONCRETE WALL (H=13'-3") (107 LFT)										
93									2	164	#6	13-03		#6 @8" VERT EF	6528

Bid Date -

** ESTIMATING BAR LIST **

LINE	LA	EP	A/D	STRUCTURE	MULT	REQ	CODE	+	X	QTY	SZ/GR	LENGTH	B	COMMENT	LINE LB
94						3			2	20	#6	40-00		#6 @8" HOR EF	7210
95						8				20	#6	7-02	H	#6 @8" HOR COR OF	1722
96						8			2	20	#6	4-07	H	#6 @8" HOR COR IF	2203
97						8				20	#5	4-10	H	#5 @8" DIG BAR	807
98															
99				>CONC. BEAM										CONCRETE BEAM	
100				MARK-B1 (15 LFT)											
101									2	3	#8	20-00		3-#8 T&B	320
102										25	#4	7-04	L	#4 @8" STIRR	122
103				MARK-B2 (11 LFT)											
104									2	4	#7	14-00		4-#7 T&B	229
105										17	#4	7-08	L	#4 @8" STIRR	87
106										17	#4	6-00	L	#4 @8" STIRR	68
107															
108				PRE-CLEARWELL										PRE-CLEARWELL CHEMICAL VAULT (S70)	
109				>CONC. SLAB										CONCRETE SLAB	
110				REF. SECTION(A,B/S71)											
111				BOTTOM SLAB											
112				16" THICK SLAB											
113				AREA = 462 SQ.FT											
114									2	45	#7	40-00		#7 @8" EW T&B	7358
115						2			2	9	#7	10-00	H	#7 @8" BENT EW BOT	736
116						2			2	9	#7	7-00		#7 @8" EW TOP	515
117										30	#4	6-04	L	#4 @48" STANDEE	127
118									2	117	#7	7-09	H	#7 @8" DWL EF	3707
119															
120				TOP SLAB											
121				12" THICK SLAB											
122				AREA = 285 SQ.FT											
123									2	26	#5	40-00		#5 @8" EW T&B	2169
124										22	#4	5-08	L	#4 @48" STANDEE	83

Bid Date -

** ESTIMATING BAR LIST **

LINE	LA	EP	A/D	STRUCTURE	MULT	REQ	CODE	+	X	QTY	SZ/GR	LENGTH	B	COMMENT	LINE LB
156	AREA = 95 SQ.FT														
157									2	10	#5	40-00		#5 @8" EW T&B	834
158										8	#4	5-08	L	#4 @48" STANDEE	30
159															
160	EQUIPMENT PAD														
161	REF. SHEET(S81 & SD3)														
162	AREA = 50 SQ.FT														
163									2	7	#5	40-00		#5 @8" EW T&B	584
164										6	#4	6-00	L	#4 @48" STANDEE	24
165															
166	>CONC. WALL CONCRETE WALL (H=18'-6") (34 LFT)														
167									2	52	#6	18-06		#6 @8" VERT EF	2890
168									2	28	#6	40-00		#6 @8" HOR EF	3364
169						2				28	#6	7-02	H	#6 @8" HOR COR OF	603
170						2			2	28	#6	4-07	H	#6 @8" HOR COR IF	771
171						2				28	#5	4-10	H	#5 @8" DIG BAR	282
172	CONCRETE WALL (H=9'-6") (13 LFT)														
173										20	#4	5-00	L	#4 @8" U-BAR	67
174										20	#6	9-06		#6 @8" VERT OF	285
175										20	#6	10-06	H	#6 @8" VERT IF	315
176									2	15	#6	13-00		#6 @8" HOR EF	586
177						2				15	#6	7-02	H	#6 @8" HOR COR OF	323
178						2			2	15	#6	4-07	H	#6 @8" HOR COR IF	413
179						2				15	#5	4-10	H	#5 @8" DIG BAR	151
180									2	20	#5	2-08		#5 @8" VERT EF	111
181									2	1	#5	13-00		#5 @8" HOR EF	27
182															
183	>CONC. BEAM CONCRETE BEAM														
184	MARK-B1 (11 LFT)														
185									2	3	#6	13-00		3-#6 T&B	117
186										18	#4	6-08	L	#4 @8" STIRR	80

Bid Date -

** ESTIMATING BAR LIST **

LINE	LA	EP	A/D	STRUCTURE	MULT	REQ	CODE	+	X	QTY	SZ/GR	LENGTH	B	COMMENT	LINE LB
187															
188				ADMIN. BLDG.										ADMINISTRATION BUILDING (S204)	
189				>CONC. SLAB										CONCRETE SLAB	
190				REF. SECTION(D,E/S207 & F,G/S208) (389 LFT)											
191									11	5	#6	40-00		#6 @8" CONT	3304
192									12	5	#6	7-02	H	#6 @8" COR	646
193										585	#6	5-04	H	#6 @8" TRANS	4686
194															
195				12" THICK SLAB											
196				AREA = 4285 SQ.FT											
197									2	356	#6	40-00		#6 @8" EW T&B	42777
198										275	#4	5-08	L	#4 @48" STANDEE	1041
199									3	2	#6	4-00		2-#6 RE-ENTRANT	36
200										45	#5	5-08	H	#5 @32" CMU DWL	266
201										25	#5	4-08	H	#5 @32" CMU DWL	122
202															
203				EQUIPMENT PAD											
204				REF. SHEET(S204 & SD3)											
205				AREA = 102 SQ.FT											
206									2	20	#5	40-00		#5 @8" EW T&B	1669
207										10	#4	6-00	L	#4 @48" STANDEE	40
208															
209				>CONC. COLUMN										CONCRETE COLUMN	
210				REF. SECTION(10/S204)											
211				(H=15'-4") (7-LOC.)											
212									7	8	#8	8-04	H	8-#8 DWL	1246
213									7	8	#8	16-08	H	8-#8 VERT	2492
214									7	34	#4	6-00	L	#4 @6" TIES	954
215				(H=13'-4") (11-LOC.)											
216									11	8	#8	8-04	H	8-#8 DWL	1958
217									11	8	#8	14-08	H	8-#8 VERT	3446

Bid Date -

** ESTIMATING BAR LIST **

LINE	LA	EP	A/D	STRUCTURE	MULT	REQ	CODE	+	X	QTY	SZ/GR	LENGTH	B	COMMENT	LINE LB
218									11	30	#4	6-00	L	#4 @6" TIES	1323
219															
220				REF. SECTION(1,A-B & B-B/S202) (H=14'-0") (1-LOC.)											
221										6	#6	14-00		6-#6 VERT	126
222									2	3	#4	5-00	L	3-#4 U-BAR T&B	20
223									2	2	#4	2-00		2-#4 HOR T&B	5
224										30	#4	7-00	L	#4 @6" TIES	140
225															
226				>CONC. BEAM							CONCRETE BEAM				
227				MARK-RB1 (143 LFT)											
228						5			2	4	#8	40-00		4-#8 T&B	4272
229						5			2	1	#5	40-00		#5 @12" MID EF	417
230										220	#4	7-04	L	#4 @8" STIRR	1078
231				MARK-RB2 (121 LFT)											
232						4			2	4	#8	40-00		4-#8 T&B	3418
233						4			2	1	#5	40-00		#5 @12" MID EF	334
234										190	#4	7-04	L	#4 @8" STIRR	931
235				MARK-RB3 (23 LFT)											
236									2	4	#8	30-00		4-#8 T&B	641
237									2	1	#5	30-00		#5 @12" MID EF	63
238										36	#4	7-04	L	#4 @8" STIRR	176
239				MARK-RB4 (14 LFT)											
240									2	4	#8	20-00		4-#8 T&B	427
241									2	1	#5	20-00		#5 @12" MID EF	42
242										22	#4	7-04	L	#4 @8" STIRR	108
243										3	#5	14-00		3-#5 CONT	44
244										22	#3	10-04	L	#3 @8" U-BAR	85
245				MARK-RB5 (28 LFT)											
246									2	6	#8	30-08		6-#8 T&B	983
247									2	9	#5	30-00		#5 @6" MID EF	563
248										44	#4	14-00	L	#4 @8" STIRR	411

Bid Date -

** ESTIMATING BAR LIST **

LINE	LA	EP	A/D	STRUCTURE	MULT	REQ	CODE	+	X	QTY	SZ/GR	LENGTH	B	COMMENT	LINE LB
249 MARK-RB6 (77 LFT)															
250						3			2	4	#8	40-00		4-#8 T&B	2563
251						2			2	1	#5	40-00		#5 @12" MID EF	167
252										120	#4	7-04	L	#4 @8" STIRR	588
253 MARK-RB7 (49 LFT)															
254						2			2	6	#8	40-00		6-#8 T&B	2563
255						2			2	9	#5	40-00		#5 @6" MID EF	1502
256										75	#4	14-00	L	#4 @8" STIRR	701
257 CMU WALL DWL															
258										165	#5	5-08	H	#5 @32" CMU DWL	975
259															
260				>CMU WALL										CMU WALL	
261 EXTERIOR CMU															
262 REF. SECTION(8/A208) (H=11'-4") (77 LFT)															
263										45	#5	17-06		#5 @32" VERT	821
264									4	2	#5	20-00		2-#5 BB	167
265										2	#5	10-04		2-#5 LINTEL	22
266										2	#5	10-04		2-#5 ADD'L LINTEL	22
267										10	#3	2-08	L	#3 @8" STIRR	10
268 REF. SECTION(2/A210) (H=4'-0") (350 LFT)															
269										165	#5	4-00		#5 @32" VERT	688
270									20	2	#5	20-00		2-#5 BB	834
271									20	2	#5	5-04	H	2-#5 BB COR	223
272 INTERIOR CMU (H=13'-9") (48 LFT)															
273										25	#5	20-00		#5 @32" VERT	521
274									3	2	#5	20-00		2-#5 BB	125
275										2	#5	5-04	H	2-#5 BB COR	11
276										2	#5	7-04		2-#5 LINTEL	15
277															
278				FWPS-1 ELEC.										FINISHED WATER PIMP STATION NO.1	
279 ELECTRICAL BUILDING (S280)															

Bid Date -

** ESTIMATING BAR LIST **

LINE	LA	EP	A/D	STRUCTURE	MULT	REQ	CODE	+	X	QTY	SZ/GR	LENGTH	B	COMMENT	LINE LB
280				>CONC. SLAB							CONCRETE SLAB				
281				REF. SECTION(J/S280) (149 LFT)											
282									4	4	#6	40-00		#6 @8" CONT	961
283									4	4	#6	7-02	H	#6 @8" COR	172
284										225	#6	5-00	H	#6 @8" TRANS	1690
285															
286				12" THICK SLAB											
287				AREA = 1305 SQ.FT											
288									2	115	#6	40-00		#6 @8" EW T&B	13818
289										85	#4	5-08	L	#4 @48" STANDEE	322
290										82	#5	5-08	H	#5 @32" CMU DWL	485
291															
292				EQUIPMENT PAD											
293				REF. SHEET(S280 & SD3)											
294				AREA = 228 SQ.FT											
295									2	20	#5	40-00		#5 @8" EW T&B	1669
296										20	#4	6-00	L	#4 @48" STANDEE	80
297															
298				>CMU WALL							CMU WALL				
299				REF. SECTION(B/A282) (H=16'-8") (143 LFT)											
300										82	#5	25-06		#5 @32" VERT	2181
301						2			9	2	#5	20-00		2-#5 BB	751
302						2			4	2	#5	20-00	H	2-#5 BB COR	334
303										2	#5	10-04		2-#5 LINTEL	22
304										2	#5	10-04		2-#5 ADD'L LINTEL	22
305										10	#3	2-08	L	#3 @8" STIRR	10
306										2	#5	7-04		2-#5 LINTEL	15
307															
308				>UPPER LEVEL							UPPER LEVEL				
309				REF. SECTION(S-03-1203/SD4) (90 LFT)											
310									3	1	#4	40-00		1-#4 CONT	80

Bid Date -

** ESTIMATING BAR LIST **

LINE	LA	EP	A/D	STRUCTURE	MULT	REQ	CODE	+	X	QTY	SZ/GR	LENGTH	B	COMMENT	LINE LB
311									4	1	#4	4-10	L	1-#4 COR	13
312										25	#4	2-04	L	#4 @48" BENT	39
313 REF. SECTION(S-03-1207/SD4) (54 LFT)															
314									2	1	#4	40-00		1-#4 CONT	53
315										15	#4	2-08	L	#4 @48" BENT	27
316															
317				CTF NO.1	CONVENTIONAL TREATMENT FACILITY NO.1 (S304)										
318				>CONC. SLAB	CONCRETE SLAB										
319 REF. SECTION(X&R/S310)															
320										700	#6	2-08		#6 @8" D&E	2804
321										700	#6	5-08		#6 @8" VERT	5958
322										310	#6	8-10	H	#6 @8" U-BAR	4113
323									13	9	#6	40-00		#6 @8" HOR	7029
324									6	11	#6	40-00		#6 @8" HOR	3965
325										310	#6	2-08		#6 @8" D&E	1242
326									2	624	#6	7-02		#6 @8" DWL EF	13434
327 REF. SECTION(T/S309 & Y/S310)															
328 12" THICK SLAB															
329 AREA = 80 SQ.FT															
330									2	10	#6	40-00		#6 @8" EW T&B	1202
331										6	#4	5-08	L	#4 @48" STANDEE	23
332										18	#6	2-08		#6 @8" D&E	72
333									2	36	#6	5-07	H	#6 @8" DWL EF	604
334										12	#3	2-08	L	#3 @8" D&E	12
335 REF. SECTION(R,S,T/S309 & X,Y/S310)															
336 12" THICK SLAB															
337 AREA = 1390 SQ.FT															
338									2	120	#4	40-00		#4 @8" EW T&B	6413
339										100	#4	5-08	L	#4 @48" STANDEE	379
340										330	#4	2-08		#4 @8" D&E	588
341 REF. SECTION(T/S309 & W,Z/S310)															

Bid Date -

** ESTIMATING BAR LIST **

LINE	LA	EP	A/D	STRUCTURE	MULT	REQ	CODE	+	X	QTY	SZ/GR	LENGTH	B	COMMENT	LINE LB
342				16" THICK MAT											
343				AREA = 175 SQ.FT											
344									2	16	#5	40-00		#5 @8" EW T&B	1335
345										24	#4	6-04	L	#4 @48" STANDEE	102
346				REF. SECTION(SS/S309)											
347				BOTTOM SLAB											
348										330	#6	2-08		#6 @8" D&E	1322
349										330	#6	5-00		#6 @8" VERT	2478
350										155	#6	8-10	H	#6 @8" U-BAR	2056
351									6	8	#6	40-00		#6 @8" HOR	2884
352									3	12	#6	40-00		#6 @8" HOR	2163
353									2	35	#6	7-02		#6 @8" DWL EF	754
354				TOP SLAB											
355				12" THICK SLAB											
356				AREA = 1075 SQ.FT											
357									2	94	#4	40-00		#4 @8" EW T&B	5023
358										70	#4	5-08	L	#4 @48" STANDEE	265
359									16	1	#4	2-08		1-#4 RE-ENTRANT	29
360										20	#4	2-04		#4 @8" D&E	31
361															
362				>CONC. WALL										CONCRETE WALL	
363				REF. SECTION(P/S309) (H=17'-6") (25 LFT)											
364									2	40	#9	7-10		#9 @8" D&E EF	2131
365									2	40	#7	17-06		#7 @8" VERT EF	2862
366									2	28	#7	25-00		#7 @8" HOR EF	2862
367						2			2	28	#7	5-11		#7 @8" HOR D&E EF	1354
368										20	#4	8-00	L	#4 @8" STIRR	107
369				REF. SECTION(BB/S309) (H=16'-2") (6 LFT)											
370									2	10	#6	4-01		#6 @8" D&E EF	123
371									2	10	#6	16-02		#6 @8" VERT EF	486
372									2	24	#6	6-00		#6 @8" HOR EF	433

Bid Date -

** ESTIMATING BAR LIST **

LINE	LA	EP	A/D	STRUCTURE	MULT	REQ	CODE	+	X	QTY	SZ/GR	LENGTH	B	COMMENT	LINE LB
373						2			2	24	#6	4-01		#6 @8" HOR D&E EF	589
374 REF. SECTION(U/S309) (340 LFT)															
375									2	512	#4	3-02		#4 @8" VERT D&E EF	2166
376										512	#4	3-00	L	#4 @8" U-BAR	1026
377									2	9	#4	40-00		#4 @8" HOR EF	481
378 REF. SECTION(X/S310) (H=11'-6") (435 LFT)															
379									2	660	#6	11-06		#6 @8" VERT EF	22800
380						12			2	18	#6	40-00		#6 @8" HOR EF	25955
381						4			2	18	#6	2-08		#6 @8" D&E EF	577
382						2			2	18	#3	2-08	L	#3 @8" D&E EF	72
383 REF. SECTION(Y/S310) (H=4'-6") (8 LFT)															
384										12	#6	2-08		#6 @8" D&E	48
385									2	12	#6	4-06		#6 @8" VERT EF	162
386									2	8	#6	8-00		#6 @8" HOR EF	192
387									2	8	#6	2-08	L	#6 @8" D&E	64
388 REF. SECTION(CC/S310) (5 LFT)															
389									2	8	#6	4-00	H	#6 @8" D&E EF	96
390									2	3	#5	5-00		#5 @8" HOR EF	31
391 REF. SECTION(DD/S310) (4 LFT)															
392									2	6	#6	4-00	H	#6 @8" D&E EF	72
393									2	3	#5	4-00		#5 @8" HOR EF	25
394 REF. SECTION(FF/S311) (168 LFT)															
395									2	255	#4	3-02	L	#4 @8" D&E EF	1079
396						5			2	3	#4	40-00		#4 @8" HOR EF	802
397						16			2	3	#4	2-06		#4 @8" D&E EF	160
398 REF. SECTION(SS/S309) (H=12'-0") (202 LFT)															
399									2	305	#6	12-00		#6 @8" VERT EF	10995
400						6			2	18	#6	40-00		#6 @8" HOR EF	12977
401						8			2	18	#6	4-01		#6 @8" HOR D&E EF	1766
402						2			2	18	#3	2-08	L	#3 @8" D&E EF	72
403 REF. SECTION(3/S311)															

Bid Date -

** ESTIMATING BAR LIST **

LINE	LA	EP	A/D	STRUCTURE	MULT	REQ	CODE	+	X	QTY	SZ/GR	LENGTH	B	COMMENT	LINE LB
404									2	5	#5	3-04	H	#5 @8" D&E EF	35
405									2	2	#6	7-06	H	#6 @8" D&E EF	45
406															
407				CTF NO.2										CONVENTIONAL TREATMENT FACILITY NO.1 (S340)	
408				>RAPID MIX										RAPID MIX & FLOCCULATION (REF-S342)	
409				12" THICK SLAB (REF-C/S356)											
410				AREA = 50 SQ.FT (EL:244.50)											
411										9	#5	40-00		#5 @8" EW T&B	375
412										6	#4	5-08	L	#4 @48" STANDEE	23
413				AREA = 250 SQ.FT (EL:249.00)											
414										36	#5	40-00		#5 @8" EW T&B	1502
415										20	#4	5-08	L	#4 @48" STANDEE	76
416				24" THICK MAT (REF-B&C/S356) & (A/S355)											
417				AREA = 3700 SQ.FT (EL:241.50)											
418										640	#7	40-00		#7 @8" EW T&B	52326
419										250	#4	7-08	L	#4 @48" STANDEE	1280
420										94	#7	12-00	H	#7 @8" STEP BAR	2306
421				REF-S-03-0504/SD2 EQUIOMENT PAD											
422				4" THICK MIN. (AREA = 25 SQ.FT) (40 LFT)											
423										2	#4	40-00		#4 @12" EW	53
424										42	#5	4-00	H	#5 @12" DWL	175
425				24" THICK CONCRETE WALL REF-B&C/356 (152 LFT)											
426									2	230	#7	6-02	H	#7 @8" DWL EF	5798
427									2	230	#7	18-10		#7 @8" VERT EF	17708
428						4			2	12	#8	40-00		#8 @8" HOR EF	10253
429						6			2	12	#8	8-00	H	#8 @8" HOR COR EF	3076
430						4			2	20	#7	40-00		#7 @8" HOR EF	13082
431						6			2	20	#7	6-00	H	#7 @8" HOR COR EF	2943
432										200	#4	6-00	L	#4 @48" SPREADER BAR	802
433				24" THICK CONCRETE WALL REF-B/356 (76 LFT)											
434									2	114	#7	6-02	H	#7 @8" DWL EF	2874

Bid Date -

** ESTIMATING BAR LIST **

LINE	LA	EP	A/D	STRUCTURE	MULT	REQ	CODE	+	X	QTY	SZ/GR	LENGTH	B	COMMENT	LINE LB
435									2	114	#7	18-10		#7 @8" VERT EF	8777
436						2			2	27	#7	40-00		#7 @8" HOR EF	8830
437						2			2	27	#7	6-00	H	#7 @8" HOR COR EF	1325
438									20	5	#4	6-00	L	#4 @48" SPREADER BAR	401
439 24" THICK CONCRETE WALL REF-C/356 (76 LFT)															
440									2	114	#7	6-02	H	#7 @8" DWL EF	2874
441									2	114	#7	18-10		#7 @8" VERT EF	8777
442						2			2	12	#8	40-00		#8 @8" HOR EF	5126
443						2			2	12	#8	8-00	H	#8 @8" HOR COR EF	1025
444						2			2	20	#7	40-00		#7 @8" HOR EF	6541
445						2			2	20	#7	6-00	H	#7 @8" HOR COR EF	981
446										200	#4	6-00	L	#4 @48" SPREADER BAR	802
447															
448 24" THICK CONCRETE WALL REF-B/356 (48 LFT)															
449									2	72	#7	6-02	H	#7 @8" DWL EF	1815
450									2	72	#7	18-10		#7 @8" VERT EF	5543
451									2	12	#8	40-00		#8 @8" HOR EF	2563
452									2	12	#8	14-00		#8 @8" HOR EF	897
453									2	27	#7	40-00		#7 @8" HOR EF	4415
454									2	27	#7	12-00		#7 @8" HOR EF	1325
455										60	#4	6-00	L	#4 @48" SPREADER BAR	240
456 24" THICK CONCRETE WALL REF-E/358 (30 LFT)															
457									2	45	#7	9-02	H	#7 @8" DWL EF	1686
458									2	45	#7	18-10		#7 @8" VERT EF	3465
459						2			2	36	#7	30-00		#7 @8" HOR EF	8830
460									2	36	#7	6-00	H	#7 @8" HOR COR EF	883
461										40	#4	6-00	L	#4 @48" SPREADER BAR	160
462 24" THICK CONCRETE WALL REF-B/356 (184 LFT)															
463									2	276	#7	6-02	H	#7 @8" DWL EF	6958
464									2	276	#7	18-10		#7 @8" VERT EF	21249
465						5			2	12	#8	40-00		#8 @8" HOR EF	12816

Bid Date -

** ESTIMATING BAR LIST **

LINE	LA	EP	A/D	STRUCTURE	MULT	REQ	CODE	+	X	QTY	SZ/GR	LENGTH	B	COMMENT	LINE LB
466						13			2	12	#8	12-00		#8 @8" HOR EF	9996
467						5			2	27	#7	40-00		#7 @8" HOR EF	22075
468						13			2	27	#7	10-00		#7 @8" HOR EF	14349
469										230	#4	6-00	L	#4 @48" SPREADER BAR	922
470	12" THICK SLAB REF-B/S356														
471	AREA = 1400 SQ.FT (EL:260.50)														
472										232	#4	40-00		#4 @8" EW T&B	6199
473										90	#4	5-08	L	#4 @48" STANDEE	341
474	CONCRETE BEAM														
475	MARK = B-2 (304 LFT)														
476						8			2	4	#7	40-00		4-#7 T&B	5233
477										500	#4	7-00	L	#4 @4" STIRR	2338
478	MARK = B-10 (70 LFT)														
479						2			2	4	#5	40-00		4-#5 T&B	668
480						5			2	4	#5	6-00	H	4-#5 COR T&B	250
481										210	#3	6-00	L	#3 @4" STIRR	474
482	MARK = B-11 (36 LFT)														
483									2	4	#5	36-00		4-#5 T&B	300
484										108	#3	6-00	L	#3 @4" STIRR	244
485	12" THICK SLAB (REF-A/S355)														
486	AREA = 150 SQ.FT														
487										25	#4	40-00		#4 @8" EW T&B	668
488										6	#4	5-08	L	#4 @48" STANDEE	23
489	CONCRETE CURB (70 LFT)														
490										72	#4	5-00	L	#4 @12" DWL	240
491									2	1	#4	40-00		1-#4 CONT	53
492									8	1	#4	4-00	L	1-#4 CONT COR	21
493															
494	>SEDIMENTATIO SEDIMENTATION (REF-S343)														
495	30" THICK MAT (REF-A/S354 & F/359) (EL:VARIES)														
496	AREA = 13900 SQ.FT														

Bid Date -

** ESTIMATING BAR LIST **

LINE	LA	EP	A/D	STRUCTURE	MULT	REQ	CODE	+	X	QTY	SZ/GR	LENGTH	B	COMMENT	LINE LB
497										1235	#9	40-00		#9 @8" LW T&B	167960
498										1256	#10	40-00		#10 @8" SW T&B	216183
499										880	#5	8-08	H	#5 @48" STANDEE	7955
500															
501 12" THICK SLAB (EL:260.50)															
502 REF-A/S335 & C/S356															
503 AREA = 1060 SQ.FT															
504										175	#4	40-00		#4 @8" EW T&B	4676
505										68	#4	5-08	L	#4 @48" STANDEE	257
506 12" THICK SLAB (EL:260.50)															
507 REF-F/S343															
508 AREA = 1950 SQ.FT															
509										425	#4	40-00		#4 @8" EW T&B	11356
510										122	#4	5-08	L	#4 @48" STANDEE	462
511 24" THICK CONCRETE WALL															
512 REF-(C/S356 & A/S355) 280 LFT															
513									2	420	#7	6-02	H	#7 @8" DWL EF	10588
514									2	420	#7	8-01		#7 @8" VERT EF	13879
515									2	420	#7	16-09		#7 @8" VERT EF	28759
516						7			2	32	#7	40-00		#7 @8" HOR EF	36628
517						4			2	32	#7	6-00	H	#7 @8" HOR COR EF	3140
518										330	#4	6-00	L	#4 @48" SPREADER BAR	1323
519 30" THICK CONCRETE WALL															
520 REF-F/S359 184 LFT															
521									2	276	#10	9-10	H	#10 @8" DWL EF	23357
522										276	#9	23-02	H	#9 @8" VERT OF	21740
523										276	#9	21-04		#9 @8" VERT IF	20019
524						5			2	30	#9	40-00		#9 @8" HOR EF	40800
525										230	#4	6-00	L	#4 @48" SPREADER BAR	922
526 REF-F/S359 276 LFT															
527									2	414	#9	8-04	H	#9 @8" DWL EF	23460

Bid Date -

** ESTIMATING BAR LIST **

LINE	LA	EP	A/D	STRUCTURE	MULT	REQ	CODE	+	X	QTY	SZ/GR	LENGTH	B	COMMENT	LINE LB
528									2	414	#9	23-00	H	#9 @8" VERT EF	64750
529						7			2	32	#9	40-00		#9 @8" HOR EF	60928
530						6			2	32	#9	8-00	H	#9 @8" HOR COR EF	10445
531										345	#4	6-00	L	#4 @48" SPREADER BAR	1383
532															
533				>PGF-WEST										PIPE GALLERY & FILTERS-WEST (REF-S344)	
534				18" THICK MAT (REF-A/S354) (EL:245.50)											
535				AREA = 7900 SQ.FT & 140 LFT											
536										1380	#8	40-00		#8 @8" EW T&B	147384
537										500	#4	6-08	L	#4 @48" STANDEE	2227
538									4	11	#8	40-00		#8 @8" LW TOP	4699
539									2	210	#8	12-00	H	#8 @8" BENT BAR ES	13457
540									2	210	#8	12-00	H	#8 @8" BENT BAR ES	13457
541				24" THICK MAT (REF-A/S354) (EL:237.50)											
542				AREA = 7900 SQ.FT											
543										1380	#8	40-00		#8 @8" EW T&B	147384
544										500	#4	7-08	L	#4 @48" STANDEE	2561
545				12" THICK SLAB (REF-A/S354) (EL:252.50)											
546				AREA = 3350 SQ.FT											
547										575	#7	40-00		#7 @8" EW T&B	47012
548										210	#4	5-08	L	#4 @48" STANDEE	795
549				12" THICK SLAB (REF-A/S354) (EL:260.50)											
550				AREA = 7760 SQ.FT											
551										1285	#5	40-00		#5 @8" EW T&B	53610
552										490	#4	5-08	L	#4 @48" STANDEE	1855
553				RE-ENT COR (53-LOC)											
554									53	1	#4	2-08	L	1-#4 RE-ENT COR	94
555				24" THICK CONCRETE WALL (REF-A/S354) (147 LFT)											
556									2	222	#7	11-02	H	#7 @8" DWL EF	10134
557									2	222	#7	10-00		#7 @8" VERT EF	9075
558									2	222	#7	4-08		#7 @8" VERT EF	4235

Bid Date -

** ESTIMATING BAR LIST **

LINE	LA	EP	A/D	STRUCTURE	MULT	REQ	CODE	+	X	QTY	SZ/GR	LENGTH	B	COMMENT	LINE LB
559						4			2	26	#7	40-00		#7 @8" HOR EF	17006
560						2			2	26	#7	7-00	H	#7 @8" HOR COR EF	1488
561										184	#4	6-00	L	#4 @48" SPREADER BAR	737
562 24" THICK CONCRETE WALL (REF-A/S354) (137 LFT)															
563									2	206	#7	5-06	H	#7 @8" DWL EF	4632
564									2	206	#7	10-00		#7 @8" VERT EF	8421
565									2	206	#7	7-06		#7 @8" VERT EF	6316
566						4			2	28	#8	40-00		#8 @6" HOR EF	23923
567						2			2	28	#8	8-00	H	#8 @6" HOR COR EF	2392
568										175	#4	6-00	L	#4 @48" SPREADER BAR	701
569 12" THICK CONCRETE WALL (REF-A/S354) (280 LFT)															
570									2	420	#6	8-00	H	#6 @8" DWL EF	10093
571									2	420	#6	14-00		#6 @8" VERT EF	17664
572						8			2	21	#6	40-00		#6 @8" HOR EF	20187
573						4			2	21	#6	6-00	H	#6 @8" HOR COR EF	1514
574										280	#4	6-00	L	#4 @48" SPREADER BAR	1122
575 24" THICK CONCRETE WALL (REF-A/S354) (280 LFT)															
576									2	420	#8	7-00	H	#8 @8" DWL EF	15700
577									2	420	#8	12-00		#8 @8" VERT EF	26914
578									2	420	#8	14-07		#8 @8" VERT EF	32708
579						8			2	33	#8	40-00		#8 @8" HOR EF	56390
580						4			2	33	#8	8-00	H	#8 @8" HRO COR EF	5639
581									350	5	#4	6-00	L	#4 @48" SPREADER BAR	7014
582 CONCRETE COLUMN (REF-1/S365) & (S-03-0802/SD3)															
583 18"x18" COLUMN (20-LOC)															
584					20					8	#7	6-05	H	8-#7 DWL	2099
585					20					8	#7	18-10	H	8-#7 VERT	6159
586					20					8	#7	8-00		8-#7 VERT	2616
587					20	4			2	2	#4	6-00	L	#4 @6" TIES T&B	1283
588					20					3	#4	6-00	L	#4 @6" TIES	240
589					20					33	#4	6-00	L	#4 @8" TIES	2645

Bid Date -

** ESTIMATING BAR LIST **

LINE	LA	EP	A/D	STRUCTURE	MULT	REQ	CODE	+	X	QTY	SZ/GR	LENGTH	B	COMMENT	LINE LB
590 CONCRETE COLUMN (REF-3/S365) & (S-03-0802/SD3)															
591 24"x24" COLUMN (1-LOC)															
592										12	#7	6-05	H	12-#7 DWL	157
593										12	#7	18-10	H	12-#7 VERT	462
594										12	#7	8-00		12-#7 VERT	196
595						4			2	2	#4	8-00	L	#4 @6" TIES T&B	86
596						4			6	2	#4	2-09	L	#4 @6" LINKS T&B	88
597										3	#4	8-00	L	#4 @6" TIES	16
598									2	3	#4	2-09	L	#4 @6" LINKS T&B	11
599										33	#4	8-00	L	#4 @8" TIES	176
600									2	33	#4	2-09	L	#4 @6" LINKS T&B	121
601 18" THICK CONCRETE WALL (REF-A/S354) (140 LFT)															
602									2	280	#6	4-00	H	#6 @8" DWL EF	3364
603									2	580	#6	15-10	H	#6 @8" VERT EF	27587
604						4			2	12	#7	40-00		#7 @6" HOR EF	7849
605						4			2	13	#6	40-00		#6 @8" HOR EF	6248
606						2			2	12	#7	7-00	H	#7 @6" HOR COR EF	687
607						2			2	13	#6	6-00	H	#6 @8" HOR COR EF	469
608										175	#4	6-00	L	#4 @48" SPREADER BAR	701
609 24" THICK MAT (EL:237.50) (REF-G/S360)															
610 AREA = 500 SQ.FT															
611										90	#8	40-00		#8 @8" EW T&B	9612
612										32	#4	7-08	L	#4 @48" STANDEE	164
613 24" THICK CONC. WALL (REF-G/S360) (70 LFT)															
614									2	105	#8	6-09	H	#8 @8" DWL EF	3785
615									2	105	#8	11-00		#8 @8" VERT EF	6168
616									2	105	#8	15-09	H	#8 @8" VERT EF	8831
617									2	105	#8	14-06		#8 @8" VERT EF	8130
618						2			2	33	#8	40-00		#8 @8" HOR EF	14098
619									2	33	#8	8-00	H	#8 @8" HOR COR EF	1410
620										100	#4	6-00	L	#4 @48" SPREADER BAR	401

Bid Date -

** ESTIMATING BAR LIST **

LINE	LA	EP	A/D	STRUCTURE	MULT	REQ	CODE	+	X	QTY	SZ/GR	LENGTH	B	COMMENT	LINE LB
621 24" THICK CONC. WALL (REF-G/S360) (42 LFT)															
622									2	64	#8	6-10	H	#8 @8" DWL EF	2335
623									2	64	#8	22-10		#8 @8" VERT EF	7804
624									2	28	#8	40-00		#8 @8" HOR EF	5981
625									2	28	#8	7-00		#8 @8" HOR EF	1047
626									2	14	#7	40-00		#7 @8" HOR EF	2289
627									2	14	#7	7-00		#7 @8" HOR EF	401
628						3			2	28	#8	8-00	H	#8 @8" HOR EF	3588
629						3			2	14	#7	7-00	H	#7 @8" HOR EF	1202
630										45	#5	5-00		#5 @32" CMU DWL	235
631										50	#4	6-00	L	#4 @48" SPREADER BAR	200
632 24" THICK CONC. WALL (REF-L/S362) (14 LFT)															
633									2	24	#8	6-10	H	#8 @8" DWL EF	876
634									2	24	#8	29-00		#8 @8" VERT EF	3717
635									2	35	#8	14-00		#8 @8" HOR EF	2617
636						2			2	35	#8	8-00	H	#8 @8" HOR EF	2990
637										8	#5	5-00		#5 @32" CMU DWL	42
638										20	#4	6-00	L	#4 @48" SPREADER BAR	80
639 18" THICK CONCRETE WALL (REF-G/S360) (212 LFT)															
640									2	318	#6	7-04	H	#6 @8" DWL EF	7005
641									2	318	#6	15-10	H	#6 @8" VERT EF	15125
642						6			2	12	#8	40-00		#8 @6" HOR EF	15379
643						6			2	12	#7	40-00		#7 @8" HOR EF	11773
644						20			2	12	#8	8-00	H	#8 @6" HOR COR EF	10253
645						20			2	12	#7	7-00	H	#7 @8" HOR COR EF	6868
646										318	#4	6-00	L	#4 @48" SPREADER BAR	1275
647															
648				>PGF-EAST										PIPE GALLERY & FILTERS - EAST (REF-S344)	
649 CONCRETE WALL															
650 (REF-J/S362) (H=23'-0") (102 LFT)															
651									2	155	#8	9-04	H	#8 @8" DWL EF	7725

Bid Date -

** ESTIMATING BAR LIST **

LINE	LA	EP	A/D	STRUCTURE	MULT	REQ	CODE	+	X	QTY	SZ/GR	LENGTH	B	COMMENT	LINE LB
652									2	155	#8	23-00	H	#8 @8" VERT EF	19037
653						3			2	28	#8	40-00		#8 @6" HOR EF	17942
654						3			2	28	#8	12-00	H	#8 @6" HOR COR EF	5383
655						3				28	#7	8-04	H	#7 @6" DIG.	1431
656						3			2	18	#7	40-00		#7 @6" HOR EF	8830
657						3			2	18	#7	10-06	H	#7 @6" HOR COR EF	2318
658						3				18	#6	8-00	H	#6 @6" DIG.	649
659										156	#4	6-00	L	#4 @48" SPREADER BAR	625
660 (REF-J/S362) (H=23'-0") (22 LFT)															
661									2	33	#8	9-04	H	#8 @8" DWL EF	1645
662									2	33	#8	29-00	H	#8 @8" VERT EF	5110
663						3			2	28	#8	40-00		#8 @6" HOR EF	17942
664						3			2	18	#7	40-00		#7 @6" HOR EF	8830
665										36	#4	6-00	L	#4 @48" SPREADER BAR	144
666 (REF-J/S362) (H=23'-0") (46 LFT)															
667									2	70	#8	9-04	H	#8 @8" DWL EF	3489
668									2	70	#8	35-00	H	#8 @8" VERT EF	13083
669						2			2	28	#8	40-00		#8 @6" HOR EF	11962
670						2			2	18	#7	40-00		#7 @6" HOR EF	5887
671										60	#4	6-00	L	#4 @48" SPREADER BAR	240
672 (REF-J/S362) (H=15'-0") (46 LFT)															
673									2	70	#7	7-11	H	#7 @8" DWL EF	2265
674									2	70	#7	20-03		#7 @8" VERT EF	5795
675						2			2	30	#8	40-00		#8 @6" HOR EF	12816
676										60	#4	6-00	L	#4 @48" SPREADER BAR	240
677 (REF-A/S354) (H=23'-0") (19 LFT)															
678									2	30	#6	6-07	H	#6 @8" DWL EF	593
679									2	30	#6	23-00		#6 @8" VERT EF	2073
680									2	35	#6	20-00		#6 @8" HOR EF	2103
681										36	#4	6-00	L	#4 @48" SPREADER BAR	144
682 (REF-M/S363) (H=23'-0") (22 LFT)															

Bid Date -

** ESTIMATING BAR LIST **

LINE	LA	EP	A/D	STRUCTURE	MULT	REQ	CODE	+	X	QTY	SZ/GR	LENGTH	B	COMMENT	LINE LB
683									2	34	#8	9-04	H	#8 @8" DWL EF	1695
684									2	34	#8	29-00		#8 @8" VERT EF	5265
685									2	46	#7	30-00		#7 @6" HOR EF	5641
686										36	#4	6-00	L	#4 @48" SPREADER BAR	144
687 (REF-M/S363) (H=23'-0") (22 LFT)															
688									2	34	#8	9-04	H	#8 @8" DWL EF	1695
689									2	34	#8	29-00		#8 @8" VERT EF	5265
690									2	46	#8	30-00		#8 @6" HOR EF	7369
691										36	#4	6-00	L	#4 @48" SPREADER BAR	144
692 (REF-M,N/S363) (H=13'-0") (100 LFT)															
693									2	155	#7	7-11	H	#7 @8" DWL EF	5016
694									2	155	#7	13-00		#7 @8" VERT EF	8237
695						3			2	27	#8	40-00		#8 @6" HOR EF	17302
696						4			2	27	#8	12-00	H	#8 @6" HOR COR EF	6921
697										75	#4	6-00	L	#4 @48" SPREADER BAR	301
698 (REF-K/S362) (H=23'-0") (34 LFT)															
699									2	52	#8	9-04	H	#8 @8" DWL EF	2592
700									2	52	#8	15-10		#8 @8" VERT EF	4397
701									2	20	#8	40-00		#8 @6" HOR EF	4272
702									2	52	#6	13-00		#6 @8" VERT EF	2031
703									2	20	#6	40-00		#6 @8" HOR EF	2403
704										45	#4	6-00	L	#4 @48" SPREADER BAR	180
705 (REF-K/S362) (H=13'-0") (38 LFT)															
706									2	60	#5	5-06	H	#5 @8" DWL EF	688
707									2	60	#5	13-00		#5 @8" VERT EF	1627
708									2	20	#5	40-00		#5 @8" HOR EF	1669
709						4			2	20	#5	6-00	H	#5 @8" HOR COR EF	1001
710										30	#4	6-00	L	#4 @48" SPREADER BAR	120
711 (REF-A/S354) (H=15'-0") (40 LFT)															
712									2	60	#6	6-01	H	#6 @8" DWL EF	1096
713									2	60	#6	16-00	H	#6 @8" VERT EF	2884

Bid Date -

** ESTIMATING BAR LIST **

LINE	LA	EP	A/D	STRUCTURE	MULT	REQ	CODE	+	X	QTY	SZ/GR	LENGTH	B	COMMENT	LINE LB
714									2	12	#7	40-00		#7 @6" HOR EF	1962
715									2	15	#6	40-00		#6 @8" HOR EF	1802
716 (REF-A/S354) (H=15'-0") (27 LFT)															
717									2	42	#6	6-01	H	#6 @8" DWL EF	768
718									2	42	#6	15-00		#6 @8" VERT EF	1893
719									2	24	#6	40-00		#6 @8" HOR EF	2884
720															
721 CONCRETE COLUMN (REF-1/S365)															
722 18"x18" COLUMN (7-LOC)															
723									7	8	#7	8-05	H	8-#7 DWL	963
724									7	8	#7	16-02	H	8-#7 VERT	1851
725									7	28	#4	6-08	L	#4 @8" TIES	873
726 (REF-3/S365) & (S-03-0802/SD3)															
727 24"x24" COLUMN (4-LOC)															
728					4					12	#7	6-05	H	12-#7 DWL	630
729					4					12	#7	14-02	H	12-#7 VERT	1390
730					4	4			2	2	#4	8-00	L	#4 @6" TIES T&B	342
731					4	4			6	2	#4	2-09	L	#4 @6" LINKS T&B	353
732					4					3	#4	8-00	L	#4 @6" TIES	64
733					4				2	3	#4	2-09	L	#4 @6" LINKS T&B	44
734					4					20	#4	8-00	L	#4 @8" TIES	428
735					4				2	20	#4	2-09	L	#4 @8" LINKS	294
736 CMU WALL DWL															
737										40	#5	5-08		#5 @32" CMU DWL	236
738															
739 MIDDLE SLAB															
740 (REF-M,N/S363, J,K/S362)															
741 12" THICK SLAB (1080 SQ.FT)															
742									2	100	#7	40-00		#7 @8" EW T&B	16352
743										70	#4	5-08	L	#4 @48" STANDEE	265
744															

Bid Date -

** ESTIMATING BAR LIST **

LINE	LA	EP	A/D	STRUCTURE	MULT	REQ	CODE	+	X	QTY	SZ/GR	LENGTH	B	COMMENT	LINE LB
745	CONCRETE BEAM														
746	MARK-B1 (62 LFT)														
747						2			2	3	#6	40-00		3-#6 T&B	721
748										190	#4	6-08	L	#4 @4" STIRR	846
749															
750	TOP SLAB														
751	(REF-M,N/S363, J,K/S362)														
752	12" THICK SLAB (3300 SQ.FT)														
753									2	280	#5	40-00		#5 @8" EW T&B	23363
754										210	#4	5-08	L	#4 @48" STANDEE	795
755									40	1	#4	2-08		1-#4 RE-ENTRANT	71
756	(REF-K/S362)														
757	48" THICK SLAB (85 SQ.FT)														
758									2	8	#7	40-00		#7 @8" EW T&B	1308
759										9	#5	11-08	H	#5 @48" STANDEE	110
760															
761	CONCRETE BEAM														
762	MARK-B3 (42 LFT)														
763						2			2	2	#7	40-00		2-#7 T&B	654
764										130	#3	4-08	L	#3 @4" STIRR	228
765	MARK-B4 (35 LFT)														
766									2	4	#8	40-00		4-#8 T&B	854
767										110	#3	6-08	L	#3 @4" STIRR	276
768	MARK-B5 (23 LFT)														
769									2	4	#8	30-00		4-#8 T&B	641
770										70	#3	6-08	L	#3 @4" STIRR	175
771	MARK-B6 (15 LFT)														
772									2	4	#8	20-00		4-#8 T&B	427
773										46	#3	6-08	L	#3 @4" STIRR	115
774	MARK-B7 (15 LFT)														
775									2	3	#5	20-00		3-#5 T&B	125

Bid Date -

** ESTIMATING BAR LIST **

LINE	LA	EP	A/D	STRUCTURE	MULT	REQ	CODE	+	X	QTY	SZ/GR	LENGTH	B	COMMENT	LINE LB
776										46	#3	5-10	L	#3 @4" STIRR	101
777 MARK-B8 (94 LFT)															
778						3			2	6	#7	40-00		6-#7 T&B	2943
779						3			2	1	#5	40-00		#5 @12" MID EF	250
780										145	#4	8-08	L	#4 @8" STIRR	839
781 MARK-B12 (28 LFT)															
782									2	4	#7	30-00		4-#7 T&B	491
783									2	1	#5	30-00		#5 @12" MID EF	63
784										145	#4	7-08	L	#4 @8" STIRR	743
785															
786 CONCRETE CURB															
787 (REF-S-03-0603/SD3) (72 LFT)															
788									2	2	#3	40-00		2-#3 CONT	60
789										80	#3	6-00	L	#3 @12" BENT	180
790															
791 EQUIPMENT PAD															
792 (REF-S-03-06504/SD2) (10 SQ.FT)															
793										1	#4	40-00		#4 @12" EW	27
794										15	#5	1-00		#5 @12" D&E	16
795															
796				>CMU WALL										CMU WALL	
797 STAIR-1															
798 (REF-J/S362) (H=11'-4") (75 LFT)															
799										45	#5	14-00		#5 @32" VERT	657
800						2			5	2	#5	20-00		2-#5 BB	417
801						2			4	2	#5	5-04	H	2-#5 BB COR	89
802									3	2	#5	7-04		2-#5 LINTEL	46
803									2	2	#5	7-04		2-#5 SILL	31
804															
805 STAIR-2															
806 (REF-J/S362) (H=11'-4") (62 LFT)															

Bid Date -

** ESTIMATING BAR LIST **

LINE	LA	EP	A/D	STRUCTURE	MULT	REQ	CODE	+	X	QTY	SZ/GR	LENGTH	B	COMMENT	LINE LB
807										40	#5	14-00		#5 @32" VERT	584
808						2			4	2	#5	20-00		2-#5 BB	334
809						2			4	2	#5	5-04	H	2-#5 BB COR	89
810									2	2	#5	7-04		2-#5 LINTEL	31
811										2	#5	7-04		2-#5 SILL	15
812															
813				CTF ELE.BLDG.										CONVENTIONAL TREATMENT FACILITY	
814				ELECTRICAL BUILDING (S380)											
815				>CONC. SLAB										CONCRETE SLAB	
816				REF. SECTION(A/S381) (128 LFT)											
817									4	3	#6	40-00		#6 @8" CONT	721
818									4	3	#6	7-02	H	#6 @8" COR	129
819										195	#6	5-00	H	#6 @8" TRANS	1464
820															
821				12" THICK SLAB											
822				AREA = 905 SQ.FT											
823									2	80	#6	40-00		#6 @8" EW T&B	9613
824										60	#4	5-08	L	#4 @48" STANDEE	227
825										80	#5	5-08	H	#5 @32" CMU DWL	473
826															
827				EQUIPMENT PAD											
828				REF. SHEET(S280 & SD3)											
829				AREA = 130 SQ.FT											
830									2	14	#5	40-00		#5 @8" EW T&B	1168
831										12	#4	6-00	L	#4 @48" STANDEE	48
832															
833				>CMU WALL										CMU WALL	
834				REF. SECTION(B/A282) (H=14'-0") (122 LFT)											
835										80	#5	20-02		#5 @32" VERT	1683
836						2			7	2	#5	20-00		2-#5 BB	584
837						2			4	2	#5	20-00	H	2-#5 BB COR	334

Bid Date -

** ESTIMATING BAR LIST **

LINE	LA	EP	A/D	STRUCTURE	MULT	REQ	CODE	+	X	QTY	SZ/GR	LENGTH	B	COMMENT	LINE LB
838										2	#5	10-04		2-#5 LINTEL	22
839										2	#5	10-04		2-#5 ADD'L LINTEL	22
840										10	#3	2-08	L	#3 @8" STIRR	10
841									3	2	#5	7-04		2-#5 LINTEL	46
842									2	2	#5	7-04		2-#5 SILL	31
843															
844				>UPPER LEVEL										UPPER LEVEL	
845				REF. SECTION(S-03-1203/SD4)										(83 LFT)	
846									3	1	#4	40-00		1-#4 CONT	80
847									4	1	#4	4-10	L	1-#4 COR	13
848										22	#4	2-04	L	#4 @48" BENT	34
849				REF. SECTION(S-03-1207/SD4)										(39 LFT)	
850										1	#4	40-00		1-#4 CONT	27
851										12	#4	2-08	L	#4 @48" BENT	21
852															
853				CLEARWELL-2										CLEARWELL NO.2 (S550)	
854				>CONC. SLAB										CONCRETE SLAB	
855				REF. SECTION(A/S553)											
856				32" THICK SLAB											
857				AREA = 21360 SQ.FT											
858										1930	#10	40-00		#10 @8" EW BOT	332192
859										1990	#10	40-00		#10 @8" EW TOP	342519
860										1340	#5	9-00	H	#5 @48" STANDEE	12579
861									2	1160	#10	12-01	H	#10 @8" DWL WF	120627
862									2	1230	#6	7-03	H	#6 @8" DWL EF	26788
863															
864				REF. SECTION(C/S554)											
865									2	10	#10	12-08	H	#10 @8" EW BOT	1090
866										6	#10	11-10	H	#10 @8" BENT	306
867				REF. SECTION(E/S554)										(2-LOC.)	
868						2			2	13	#10	14-06	H	#10 @8" EW BOT	3244

Bid Date -

**** ESTIMATING BAR LIST ****

LINE	LA	EP	A/D	STRUCTURE	MULT	REQ	CODE	+	X	QTY	SZ/GR	LENGTH	B	COMMENT	LINE LB
869						2			2	13	#10	12-00	H	#10 @8" EW TOP	2685
870															
871				>CONC. WALL							CONCRETE WALL				
872				REF. SECTION(A/S553)											
873				2'-6" THICK (H=VARIES) (600 LFT)											
874									2	455	#8	23-08		#8 @8" VERT EF	57503
875									2	480	#8	24-04		#8 @8" VERT EF	62371
876						18			2	12	#8	40-00		#8 @6" HOR EF	46138
877						3				12	#8	12-00	H	#8 @6" HOR COR OF	1153
878						3			2	12	#8	7-04	H	#8 @6" HOR COR IF	1410
879						3				12	#6	9-06	H	#6 @6" DIG.	514
880						2			2	12	#8	7-04	H	#8 @6" HOR COR EF	940
881						2			2	12	#6	9-06	H	#6 @6" DIG. EF	685
882						18			2	27	#8	40-00		#8 @8" HOR EF	103810
883						9			2	1	#8	40-00		#8 @8" HOR EF	1922
884						3				27	#8	12-00	H	#8 @8" HOR COR OF	2595
885						3			2	27	#8	7-04	H	#8 @8" HOR COR IF	3172
886						3				27	#6	9-06	H	#6 @8" DIG.	1156
887						2			2	27	#8	7-04	H	#8 @8" HOR COR EF	2115
888						2			2	27	#6	9-06	H	#6 @8" DIG. EF	1541
889										900	#4	4-02	L	#4 @48" SPREADER BAR 2505	
890						2			2	55	#5	5-08		#5 @8" VERT EF	1300
891						2			2	4	#7	40-00		#7 @8" HOR EF	1308
892						6				14	#5	11-04		#5 @8" STIRR	993
893						6			2	4	#7	8-00		#7 @8" HOR EF	785
894				2'-6" THICK (H=24'-8") (150 LFT)											
895									2	225	#8	24-08		#8 @8" VERT EF	29637
896						4			2	12	#8	40-00		#8 @6" HOR EF	10253
897						2			2	12	#8	7-04	H	#8 @6" HOR COR EF	940
898						2			2	12	#6	9-00	H	#6 @6" DIG. EF	649
899						4			2	28	#8	40-00		#8 @8" HOR EF	23923

Bid Date -

** ESTIMATING BAR LIST **

LINE	LA	EP	A/D	STRUCTURE	MULT	REQ	CODE	+	X	QTY	SZ/GR	LENGTH	B	COMMENT	LINE LB
900						2			2	28	#8	7-04	H	#8 @8" HOR COR EF	2193
901						2			2	28	#6	9-00	H	#6 @8" DIG. EF	1514
902										228	#4	4-02	L	#4 @48" SPREADER BAR	635
903 1'-6" THICK (H=24'-4") (263 LFT)															
904									2	395	#6	24-04		#6 @8" VERT EF	28873
905						7			2	37	#6	40-00		#6 @8" HOR EF	31121
906						2			2	37	#6	4-07	H	#6 @8" HOR COR EF	1019
907						2			2	37	#5	7-08	H	#5 @8" DIG. EF	1183
908										400	#4	3-02	L	#4 @48" SPREADER BAR	846
909 1'-6" THICK (H=20'-6") (530 LFT)															
910									2	800	#6	20-06		#6 @8" VERT EF	49266
911						15			2	31	#6	40-00		#6 @8" HOR EF	55874
912						4			2	31	#6	4-07	H	#6 @8" HOR COR EF	1707
913						4			2	31	#5	7-08	H	#5 @8" DIG. EF	1983
914										800	#4	3-02	L	#4 @48" SPREADER BAR	1692
915															
916 REF. SECTION(C/S554) (H=24'-4") (22 LFT)															
917									2	34	#6	24-04		#6 @8" VERT EF	2485
918									2	37	#6	22-00		#6 @8" HOR EF	2445
919						2				37	#6	7-02	H	#6 @8" HOR COR OF	797
920						2			2	37	#6	4-07	H	#6 @8" HOR COR IF	1019
921										37	#5	7-08	H	#5 @8" DIG.	296
922										36	#4	3-02	L	#4 @48" SPREADER BAR	76
923															
924	>UPPER LEVEL					UPPER LEVEL									
925 REF. SECTION(B/S553)															
926 14" THICK SLAB															
927 AREA = 2720 SQ.FT															
928									2	230	#5	40-00		#5 @8" EW T&B	19191
929										180	#4	6-00	L	#4 @48" STANDEE	721
930															

Bid Date -

** ESTIMATING BAR LIST **

LINE	LA	EP	A/D	STRUCTURE	MULT	REQ	CODE	+	X	QTY	SZ/GR	LENGTH	B	COMMENT	LINE LB
962									2	367	#9	40-00		#9 @8" EW T&B	99824
963										200	#5	9-00	H	#5 @48" STANEE	1877
964 CONCRETE WALL DWL															
965 REF.-(A/S625 & S622)															
966									2	420	#9	9-03	H	#9 @8" DWL EF	26418
967									2	201	#7	8-10	H	#7 @8" DWL EF	7258
968										31	#7	8-10	H	#7 @8" DWL	560
969															
970				>CONC.WALL							CONCRETE WALL				
971 REF.-(A/S625 & S622)(236 LFT)(H =28'-0")															
972									2	356	#8	28-00		#8 @8" VERT EF	53229
973						7			2	13	#8	40-00		#8 @6" HOR EF	19438
974						7			2	34	#8	40-00		#8 @8" HOR EF	50837
975						4				13	#8	12-00	H	#8 @6" COR OF	1666
976						4				34	#8	12-00	H	#8 @8" COR OF	4357
977						4			2	13	#8	7-05	H	#8 @6" COR IF	2059
978						4			2	34	#8	7-05	H	#8 @8" COR IF	5386
979						4				13	#6	8-07	H	#6 @6" ADDL	670
980						4				34	#6	8-07	H	#6 @8" ADDL	1753
981										415	#4	5-09	L	#4 @48" SPREADED	1594
982 REF.-(B/S626 & S622)(35 LFT)(H =28'-0")															
983									2	55	#8	28-00		#8 @8" VERT EF	8224
984									2	13	#8	40-00		#8 @6" HOR EF	2777
985									2	34	#8	40-00		#8 @8" HOR EF	7262
986						2			2	13	#8	7-05	H	#8 @6" INTER COR	1030
987						2			2	34	#8	7-05	H	#8 @8" INTER COR	2693
988						2			2	13	#6	8-07	H	#6 @6" ADDL	670
989						2			2	34	#6	8-07	H	#6 @8" ADDL	1753
990										65	#4	5-03	L	#4 @48" SPREADED	228
991 REF.-(B/S626 & S622)(35 LFT)(H =28'-0")															
992									2	55	#7	28-00		#7 @8" VERT EF	6296

Bid Date -

** ESTIMATING BAR LIST **

LINE	LA	EP	A/D	STRUCTURE	MULT	REQ	CODE	+	X	QTY	SZ/GR	LENGTH	B	COMMENT	LINE LB
993									2	13	#8	40-00		#8 @6" HOR EF	2777
994									2	34	#7	40-00		#7 @8" HOR EF	5560
995						2			2	13	#8	7-05	H	#8 @6" INTER COR	1030
996						2			2	34	#7	7-05	H	#7 @8" INTER COR	2062
997						2			2	13	#6	8-07	H	#6 @6" ADDL	670
998						2			2	34	#6	8-07	H	#6 @8" ADDL	1753
999										65	#4	5-03	L	#4 @48" SPREADED	228
1000	REF.-(B/S626 & S622)(96 LFT)(H =28'-0")														
1001									2	146	#6	28-00		#6 @8" VERT EF	12280
1002						3			2	43	#6	40-00		#6 @8" HOR EF	15501
1003						6			2	43	#6	7-05	H	#6 @8" INTER COR	5748
1004						6			2	43	#5	8-05	H	#5 @8" ADDL	4530
1005										170	#4	5-03	L	#4 @48" SPREADED	596
1006									6	43	#5	7-06	H	#5 @8" U-BAR	2018
1007	REF.-(B/S626 & S622)(20 LFT)(H =28'-0")														
1008										31	#6	28-00		#6 @8" VERT	1304
1009										43	#6	20-00		#6 @8" HOR	1292
1010										31	#6	6-09	H	#6 @8" D&E	314
1011	REF.-(B/S625 & S623)(110 LFT)(H =8'-0")														
1012									2	168	#5	9-08	H	#5 @8" VERT EF	3388
1013						3			2	13	#5	40-00		#5 @8" HOR EF	3254
1014						4			2	13	#5	6-00	H	#5 @8" COR EF	651
1015															
1016	>UPPER LEVEL			UPPER LEVEL (LEVEL =238.33')											
1017	REF.-(A/S625 & S622)(1095 SQ.FT)(12" THICK)														
1018									2	95	#7	40-00		#7 @8" EW T&B	15534
1019										70	#4	5-08	L	#4 @48" STANDEE	265
1020	CONCRETE BAEM														
1021	MARK =B-1														
1022	REF.-(A/S625 & S628)(108 LFT)														
1023									3	10	#8	40-00		10-#8 BOT	3204

Bid Date -

** ESTIMATING BAR LIST **

LINE	LA	EP	A/D	STRUCTURE	MULT	REQ	CODE	+	X	QTY	SZ/GR	LENGTH	B	COMMENT	LINE LB
1024									3	5	#8	40-00		5-#8 TOP	1602
1025						3			2	2	#5	40-00		#5 @12" MID EF	501
1026										328	#4	9-00	L	#4 @4" STIRR	1972
1027 MARK =B-2															
1028 REF.-(A/S625 & S628)(25 LFT)															
1029									2	5	#8	30-00		5-#8 T&B	801
1030						2			2	2	#5	30-00		#5 @12" MID EF	250
1031										52	#4	9-00	L	#4 @6" STIRR	313
1032 MARK =B-3															
1033 REF.-(A/S625 & S628)(50 LFT)															
1034						2			2	5	#8	40-00		5-#8 T&B	2136
1035						2			2	2	#5	40-00		#5 @12" MID EF	334
1036										102	#4	9-00	L	#4 @6" STIRR	613
1037 MARK =B-4															
1038 REF.-(A/S625 & S628)(25 LFT)															
1039									2	3	#8	30-00		3-#8 T&B	481
1040									2	1	#5	30-00		#5 @12" MID EF	63
1041										52	#4	6-00	L	#4 @6" STIRR	208
1042 MARK =B-5															
1043 REF.-(A/S625 & S628)(10 LFT)															
1044									2	3	#8	15-00		3-#8 T&B	240
1045									2	1	#5	15-00		#5 @12" MID EF	31
1046										22	#4	6-00	L	#4 @6" STIRR	88
1047 MARK =B-6															
1048 REF.-(A/S625 & S628)(27 LFT)															
1049									2	4	#6	30-00		4-#6 T&B	360
1050									2	1	#5	30-00		#5 @12" MID EF	63
1051										35	#3	7-00	L	#3 @10" STIRR	92
1052 MARK =B-7															
1053 REF.-(A/S625 & S628)(20 LFT)															
1054									2	4	#6	25-00		4-#6 T&B	300

Bid Date -

** ESTIMATING BAR LIST **

LINE	LA	EP	A/D	STRUCTURE	MULT	REQ	CODE	+	X	QTY	SZ/GR	LENGTH	B	COMMENT	LINE LB
1055									2	1	#5	25-00		#5 @12" MID EF	52
1056										32	#3	7-00	L	#3 @10" STIRR	84
1057 MARK =B-8															
1058 REF.-(A/S625 & S628)(14 LFT)															
1059									2	4	#6	15-00		4-#6 T&B	180
1060									2	1	#5	15-00		#5 @12" MID EF	31
1061										20	#3	7-00	L	#3 @10" STIRR	53
1062															
1063 MARK =GB-1															
1064 REF.-(A/S625 & S628)(45 LFT)															
1065									2	7	#9	40-00		7-#9 T&B	1904
1066									2	7	#9	20-00		7-#9 T&B	952
1067									2	2	#5	40-00		#5 @12" MID EF	167
1068									2	2	#5	20-00		#5 @12" MID EF	83
1069										70	#4	10-04	L	#4 @8" STIRR	483
1070 MARK =GB-2															
1071 REF.-(A/S625 & S628)(44 LFT)															
1072									2	7	#9	40-00		7-#9 T&B	1904
1073									2	7	#9	20-00		7-#9 T&B	952
1074									2	2	#5	40-00		#5 @12" MID EF	167
1075									2	2	#5	20-00		#5 @12" MID EF	83
1076										70	#4	10-04	L	#4 @8" STIRR	483
1077 MARK =GB-3															
1078 REF.-(A/S625 & S628)(27 LFT)															
1079									2	9	#9	30-00		9-#9 T&B	1836
1080									2	10	#5	30-00		#5 @6" MID EF	626
1081										85	#4	10-04	L	#4 @4" STIRR	587
1082															
1083 MARK =RB-1															
1084 REF.-(A/S625 & S628)(121 LFT)															
1085						4			2	5	#7	40-00		5-#7 T&B	3270

Bid Date -

** ESTIMATING BAR LIST **

LINE	LA	EP	A/D	STRUCTURE	MULT	REQ	CODE	+	X	QTY	SZ/GR	LENGTH	B	COMMENT	LINE LB
1086						4			2	1	#5	40-00		#5 @12" MID EF	334
1087										150	#4	7-00	L	#4 @10" STIRR	701
1088									2	5	#7	10-06	H	5-#7 COR T&B	215
1089									2	1	#5	6-00	H	#5 @12" COR	13
1090 MARK =RB-2															
1091 REF.-(A/S625 & S628)(37 LFT)															
1092									2	5	#7	40-00		5-#7 T&B	818
1093									2	1	#5	40-00		#5 @12" MID EF	83
1094										48	#4	7-00	L	#4 @10" STIRR	224
1095 MARK =RB-3															
1096 REF.-(A/S625 & S628)(28 LFT)															
1097									2	5	#7	30-00		5-#7 T&B	613
1098									2	1	#5	30-00		#5 @12" MID EF	63
1099										35	#4	7-00	L	#4 @10" STIRR	164
1100 MARK =RB-4															
1101 REF.-(A/S625 & S628)(136 LFT)															
1102						4			2	5	#9	40-00		5-#9 T&B	5440
1103						4			2	2	#5	40-00		#5 @12" MID EF	668
1104										210	#4	7-00	L	#4 @8" STIRR	982
1105						4			2	5	#9	13-06	H	5#9 COR T&B	1836
1106						4			2	2	#5	6-00	H	#5 @12" COR	100
1107 MARK =RB-5															
1108 REF.-(A/S625 & S628)(39 LFT)															
1109									2	5	#9	40-00		5-#9 T&B	1360
1110									2	2	#5	40-00		#5 @12" MID EF	167
1111										65	#4	7-00	L	#4 @8" STIRR	304
1112															
1113 LEVEL =246.33'															
1114 REF.-(A/S625 & S624)(3335 SQ.FT)(18" THICK)															
1115									2	280	#5	40-00		#5 @8" EW T&B	23363
1116										210	#4	6-08	L	#4 @48" STANDEE	935

Bid Date -

** ESTIMATING BAR LIST **

LINE	LA	EP	A/D	STRUCTURE	MULT	REQ	CODE	+	X	QTY	SZ/GR	LENGTH	B	COMMENT	LINE LB
1117 REF.-(A/S625 & S624)(5090 SQ.FT)(18" THICK)															
1118									2	440	#7	40-00		#7 @8" EW T&B	71949
1119										320	#4	6-08	L	#4 @48" STANDEE	1425
1120									2	2	#7	6-04		2-#7 ADDL T&B	52
1121 REF.-(A/S625 & S624)(316 LFT)															
1122									10	5	#7	40-00		#7 @8" CONT	4088
1123										478	#7	6-10	H	#7 @8" BENT	6676
1124									6	5	#7	10-06	H	#7 @8" CONT COR	644
1125										237	#5	5-06	H	#5 @32" CMU DWL	1360
1126										90	#5	5-06	H	#5 ADDL CMU DWL	516
1127 CONCRETE CURB															
1128 REF.-(S-03-0603/SD3 & S625)(239 LFT)															
1129									7	1	#4	40-00		1-#4 CONT	187
1130										242	#4	2-10	L	#4 @12" DWL	458
1131									4	1	#4	4-10	L	1-#4 COR	13
1132 EQUIPMENT PAD															
1133 REF.-(S-03-0504/SD3 & S620)(1215 SQ.FT)															
1134										68	#4	40-00		#4 @12" EW	1817
1135										660	#5	2-08	H	#5 @12" DWL	1836
1136										660	#5	2-00		#5 @12" DWL	1377
1137 EQUIPMENT PAD															
1138 REF.-(S-03-0508/SD3 & S620)(395 SQ.FT)															
1139									2	34	#5	40-00		#5 @8" EW T&B	2837
1140										28	#4	6-08	L	#4 @48" STANDEE	125
1141										660	#5	2-08	H	#5 @12" DWL	1836
1142										660	#5	2-00		#5 @12" DWL	1377
1143															
1144				>CMU WALL										CMU WALL	
1145 REF.-(A/S625 & S620)(239 LFT)(H =VARIES)															
1146										92	#5	33-04		#5 @32" VERT	3199
1147										45	#5	33-04		#5 ADDL VERT	1565

Bid Date -

** ESTIMATING BAR LIST **

LINE	LA	EP	A/D	STRUCTURE	MULT	REQ	CODE	+	X	QTY	SZ/GR	LENGTH	B	COMMENT	LINE LB
1148									3	2	#5	7-04		2-#5 LINTEL	46
1149									5	2	#5	10-04		2-#5 LINTEL	108
1150									5	15	#3	2-04	L	#3 @8" STIRR	66
1151										2	#6	16-00		2-#6 LINTEL	48
1152										25	#3	3-08	L	#3 @8" STIRR	34
1153						2			14	2	#5	20-00		2-#5 BB	1168
1154						2			4	2	#5	5-04	H	2-#5 BB COR	89
1155 REF.-(B/S626 & S620)(302 LFT)(H=VARIES)															
1156										115	#5	30-08		#5 @32" VERT	3678
1157										35	#5	30-08		#5 ADDL VERT	1119
1158									3	2	#5	7-04		2-#5 LINTEL	46
1159										2	#5	10-04		2-#5 LINTEL	22
1160										15	#3	2-04	L	#3 @8" STIRR	13
1161									19	2	#5	20-00		2-#5 BB	793
1162									4	2	#5	5-04	H	2-#5 BB COR	45
1163 REF.-(B/S626 & S620)(72 LFT)(H=VARIES)															
1164										30	#5	18-00		#5 @32" VERT	563
1165										10	#5	18-00		#5 ADDL VERT	188
1166										2	#5	10-04		2-#5 LINTEL	22
1167										15	#3	2-04	L	#3 @8" STIRR	13
1168									6	2	#5	20-00		2-#5 BB	250
1169									2	2	#5	5-04	H	2-#5 BB COR	22
1170															
1171				EFF TANK										ELECTRICAL FACILITY-FUEL TANK (S690)	
1172				>MAT FTG										MAT FOOTING	
1173 REF.-(A/S690)(1200 SQ.FT)(18" THICK)															
1174									2	102	#6	40-00		#6 @8" EW T&B	12256
1175										78	#4	6-08	L	#4 @48" STANDEE	347
1176															
1177 EQUIPMENT PAD															
1178 REF.-(S-03-0504/SD3 & S690)(10 SQ.FT)															

Bid Date -

** ESTIMATING BAR LIST **

LINE	LA	EP	A/D	STRUCTURE	MULT	REQ	CODE	+	X	QTY	SZ/GR	LENGTH	B	COMMENT	LINE LB	
1179										2	#4	40-00		#4 @12" EW	53	
1180										15	#5	2-08	H	#5 @12" DWL	42	
1181										15	#5	2-00		#5 @12" DWL	31	
1182																
1183				>CONC.PEDESTA										CONCRETE PEDESTAL		
1184				REF.-(S-03-0507/SD3 & S690)(2 LOC)												
1185										2	11	#5	4-02	H	#5 @12" D/V	96
1186										2	11	#5	3-04		#5 @12" D/V	76
1187										2	3	#4	24-00	L	#4 @12" TIES	96
1188										2	2	#4	24-00	L	2-#4 TIES @TOP	64
1189																
1190				CF NO.1										CHEMICAL FACILITY NO.1 (S700)		
1191				>MAT FTG										MAT FOOTING		
1192				REF.-(B/S712 & S703)(6365 SQ.FT)												
1193										2	555	#8	40-00		#8 @8" EW T&B	118548
1194										400	#4	7-04	L	#4 @48" STANDEE	1959	
1195				REF.-(B/S712 & S703)(126 LFT)												
1196										4	12	#8	40-00		#8 @8" CONT	5126
1197										190	#8	11-06	H	#8 @8" DWL	5834	
1198																
1199				REF.-(D/S713 & S704)(8436 SQ.FT)												
1200										2	740	#8	40-00		#8 @8" EW T&B	158064
1201										530	#4	7-04	L	#4 @48" STANDEE	2596	
1202				REF.-(D/S713 & S704)(226 LFT)												
1203										7	12	#8	40-00		#8 @8" CONT	8971
1204										342	#8	11-06	H	#8 @8" DWL	10501	
1205																
1206				REF.-(B/S712 & S703)(242 LFT)												
1207										2	365	#8	6-09	H	#8 @8" D/V EF	13156
1208				REF.-(B/S712 & S703)(245 LFT)												
1209										2	495	#6	6-09	H	#6 @6" D/V EF	10037

Bid Date -

** ESTIMATING BAR LIST **

LINE	LA	EP	A/D	STRUCTURE	MULT	REQ	CODE	+	X	QTY	SZ/GR	LENGTH	B	COMMENT	LINE LB
1241						2			6	1	#4	4-00		1-#4 NOSING	32
1242						2			6	7	#4	2-06	L	#4 @8" DWL	140
1243 EQUIPMENT PAD															
1244 REF.-(S-03-0504/SD3 & S706)(2000 SQ.FT)															
1245										110	#4	40-00		#4 @12" EW	2939
1246										635	#5	2-08	H	#5 @12" DWL	1766
1247										635	#5	2-00		#5 @12" DWL	1325
1248															
1249 >CONC.WALL CONCRETE WALL															
1250 REF.-(B/S712 & S703)(242 LFT)															
1251						7			2	7	#8	40-00		#8 @8" HOR EF	10466
1252						2				7	#8	12-00	H	#8 @8" COR OF	449
1253						2			2	7	#8	7-05	H	#8 @8" COR IF	554
1254						2				7	#6	8-07	H	#6 @8" ADDL	180
1255 REF.-(C/S712 & S703)(245 LFT)															
1256						7			2	9	#6	40-00		#6 @6" HOR EF	7570
1257						8				9	#6	12-00	H	#6 @6" COR OF	1298
1258						8			2	9	#6	7-05	H	#6 @6" COR IF	1604
1259						8				9	#5	6-00	H	#5 @6" ADDL	451
1260 REF.-(C/S712 & S703)(471 LFT)															
1261						13			2	9	#6	40-00		#6 @6" HOR EF	14059
1262						23				9	#6	12-00	H	#6 @6" COR OF	3731
1263						23			2	9	#6	7-05	H	#6 @6" COR IF	4612
1264						23			2	9	#5	6-00	H	#5 @6" ADDL	2591
1265															
1266 CONCRETE COLUMN DWL															
1267 REF.-(1/S716 & S705)(24 LOC)															
1268									24	12	#8	8-06	H	12-#8 DWL	6536
1269															
1270 REF.-(D/S713 & S704)(298 LFT)															
1271						9			2	7	#8	40-00		#8 @8" HOR EF	13457

Bid Date -

** ESTIMATING BAR LIST **

LINE	LA	EP	A/D	STRUCTURE	MULT	REQ	CODE	+	X	QTY	SZ/GR	LENGTH	B	COMMENT	LINE LB
1272						2				7	#8	12-00	H	#8 @8" COR OF	449
1273						2			2	7	#8	7-05	H	#8 @8" COR IF	554
1274						2				7	#6	8-07	H	#6 @8" ADDL	180
1275 REF.-(D/S713 & S704)(218 LFT)															
1276						7			2	9	#6	40-00		#6 @6" HOR EF	7570
1277						4				9	#6	12-00	H	#6 @6" COR OF	649
1278						4			2	9	#6	7-05	H	#6 @6" COR IF	802
1279						4				9	#5	6-00	H	#5 @6" ADDL	225
1280 REF.-(E/S713 & S704)(437 LFT)															
1281						12			2	9	#6	40-00		#6 @6" HOR EF	12977
1282						15				9	#6	12-00	H	#6 @6" COR OF	2433
1283						15			2	9	#6	7-05	H	#6 @6" COR IF	3008
1284						15			2	9	#5	6-00	H	#5 @6" ADDL	1690
1285 CONCRETE COLUMN DWL															
1286 REF.-(1/S716 & S706)															
1287									17	12	#8	8-06	H	12-#8 DWL	4630
1288									3	16	#8	8-06	H	16-#8 DWL	1089
1289									2	24	#8	8-06	H	24-#8 DWL	1089
1290									5	20	#8	8-06	H	20-#8 DWL	2269
1291									2	16	#8	8-06	H	16-#8 DWL	726
1292									2	22	#8	8-06	H	22-#8 DWL	999
1293 CMU WALL DWL															
1294 REF.-(B/S712 & S705)															
1295										367	#6	8-04		#6 @32" CMU DWL	4594
1296										177	#6	8-04		#6 ADDL CMU DWL	2215
1297															
1298														>CONC.COLUMN CONCRETE COLUMN	
1299 REF.-(1/S716 & S705)(24 LOC)(H =VARIES)															
1300						24				12	#8	26-00		12-#8 VERT	19993
1301						24				12	#8	10-00	H	12-#8 VERT	7690
1302						24				54	#3	8-00	L	#3 @6" TIES	3898

Bid Date -

** ESTIMATING BAR LIST **

LINE	LA	EP	A/D	STRUCTURE	MULT	REQ	CODE	+	X	QTY	SZ/GR	LENGTH	B	COMMENT	LINE LB
1303						24			2	54	#3	3-00	L	#3 @6" LINKS	2924
1304															
1305 REF.-(1/S716 & S706)(17 LOC)(H =VARIES)															
1306						17				12	#8	36-00		12-#8 VERT	19608
1307						17				12	#8	10-00	H	12-#8 VERT	5447
1308						17				74	#3	8-00	L	#3 @6" TIES	3784
1309						17			2	74	#3	3-00	L	#3 @6" LINKS	2838
1310 REF.-(2/S716 & S706)(3 LOC)(H =VARIES)															
1311						3				16	#8	36-00		16-#8 VERT	4614
1312						3				16	#8	10-00	H	16-#8 VERT	1282
1313						3			2	74	#3	8-00	L	#3 @6" TIES	1336
1314						3				74	#3	3-00	L	#3 @6" LINKS	250
1315 REF.-(3/S716 & S706)(2 LOC)(H =VARIES)															
1316						2				24	#8	36-00		24-#8 VERT	4614
1317						2				24	#8	10-00	H	24-#8 VERT	1282
1318						2				74	#3	12-00	L	#3 @6" TIES	668
1319						2				74	#3	8-00	L	#3 @6" TIES	445
1320						2				74	#3	8-00	L	#3 @6" TIES	445
1321						2				74	#3	3-06	L	#3 @6" LINKS	195
1322 REF.-(4/S716 & S706)(5 LOC)(H =VARIES)															
1323						5				20	#8	36-00		20-#8 VERT	9612
1324						5				20	#8	10-00	H	20-#8 VERT	2670
1325						5				74	#3	10-00	L	#3 @6" TIES	1391
1326						5				74	#3	8-00	L	#3 @6" TIES	1113
1327						5				74	#3	3-00	L	#3 @6" LINKS	417
1328 REF.-(5/S716 & S706)(2 LOC)(H =VARIES)															
1329						2				16	#8	36-00		16-#8 VERT	3076
1330						2				16	#8	10-00	H	16-#8 VERT	854
1331						2				74	#3	8-00	L	#3 @6" TIES	445
1332						2				74	#3	7-04	L	#3 @6" TIES	408
1333						2				74	#3	3-00	L	#3 @6" LINKS	167

Bid Date -

** ESTIMATING BAR LIST **

LINE	LA	EP	A/D	STRUCTURE	MULT	REQ	CODE	+	X	QTY	SZ/GR	LENGTH	B	COMMENT	LINE LB
1334 REF.-(6/S716 & S706)(2 LOC)(H=VARIES)															
1335						2				22	#8	36-00		22-#8 VERT	4229
1336						2				22	#8	10-00	H	22-#8 VERT	1175
1337						2				74	#3	12-08	L	#3 @6" TIES	705
1338						2				74	#3	8-00	L	#3 @6" TIES	445
1339						2				74	#3	3-04	L	#3 @6" TIES	185
1340						2				74	#3	3-00	L	#3 @6" LINKS	167
1341															
1342 >CMU WALL CMU WALL															
1343 REF.-(B/S712 & S705)(128 LFT)(H= VARIES)															
1344										50	#6	15-06		#6 @32" VERT	1164
1345										20	#6	15-06		#6 ADDL VERT	466
1346										50	#6	8-04	H	#6 @32" VERT	626
1347										20	#6	8-04	H	#6 ADDL VERT	250
1348										2	#5	8-00		2-#5 LINTEL	17
1349										13	#3	2-06	L	#3 @8" STIRR	12
1350										2	#5	8-00		2-#5 SILL	17
1351									3	2	#5	10-04		2-#5 LINTEL	65
1352									3	18	#3	3-00	L	#3 @8" STIRR	61
1353						3			8	2	#5	20-00		2-#5 BB	1001
1354						3			2	2	#5	5-02	H	2-#5 BB COR	65
1355 REF.-(B/S712 & S705)(101 LFT)(H= VARIES)															
1356										40	#6	22-04		#6 @32" VERT	1342
1357										15	#6	22-04		#6 ADDL VERT	503
1358									3	2	#5	8-00		2-#5 LINTEL	50
1359									3	13	#3	2-06	L	#3 @8" STIRR	37
1360									6	2	#5	20-00		2-#5 BB	250
1361									2	2	#5	5-02	H	2-#5 BB COR	22
1362 REF.-(G/S715 & S705)(56 LFT)(H= VARIES)															
1363										25	#6	31-00		#6 @32" VERT	1164
1364										12	#6	31-00		#6 ADDL VERT	559

Bid Date -

** ESTIMATING BAR LIST **

LINE	LA	EP	A/D	STRUCTURE	MULT	REQ	CODE	+	X	QTY	SZ/GR	LENGTH	B	COMMENT	LINE LB
1365										25	#6	8-04	H	#6 @32" VERT	313
1366										12	#6	8-04	H	#6 ADDL VERT	150
1367									2	2	#5	8-00		2-#5 LINTEL	33
1368									2	13	#3	2-06	L	#3 @8" STIRR	24
1369									4	2	#5	20-00		2-#5 BB	167
1370										2	#5	5-02	H	2-#5 BB COR	11
1371 REF.-(C/S712 & S705)(104 LFT)(H= VARIES)															
1372										41	#6	31-00		#6 @32" VERT	1909
1373										25	#6	31-00		#6 ADDL VERT	1164
1374										41	#6	8-04	H	#6 @32" VERT	513
1375										25	#6	8-04	H	#6 ADDL VERT	313
1376										2	#6	16-00		2-#6 LINTEL	48
1377										26	#3	3-08	L	#3 @8" STIRR	36
1378										2	#6	14-00		2-#6 LINTEL	42
1379										23	#3	3-08	L	#3 @8" STIRR	32
1380									2	2	#6	18-00		2-#6 LINTEL	108
1381									2	30	#3	3-08	L	#3 @8" STIRR	83
1382									4	2	#5	20-00		2-#5 BB	167
1383										2	#5	5-02	H	2-#5 BB COR	11
1384 REF.-(C/S712 & S705)(198 LFT)(H= VARIES)															
1385										78	#6	40-00		#6 @32" VERT	4686
1386										35	#6	40-00		#6 ADDL VERT	2103
1387									4	2	#5	8-00		2-#5 LINTEL	67
1388									4	13	#3	2-06	L	#3 @8" STIRR	49
1389										3	2	#5		2-#5 LINTEL	50
1390									3	13	#3	2-06	L	#3 @8" STIRR	37
1391										3	2	#5		2-#5 SILL	50
1392										12	2	#5		2-#5 BB	501
1393										10	2	#5	H	2-#5 BB COR	108
1394 REF.-(A/S711 & S706)(28 LFT)(H= VARIES)															
1395										11	#6	54-03		#6 @32" VERT	896

Bid Date -

** ESTIMATING BAR LIST **

LINE	LA	EP	A/D	STRUCTURE	MULT	REQ	CODE	+	X	QTY	SZ/GR	LENGTH	B	COMMENT	LINE LB
1396										4	#6	54-03		#6 ADDL VERT	326
1397										11	#6	8-04	H	#6 @32" VERT	138
1398										4	#6	8-04	H	#6 ADDL VERT	50
1399						2			2	2	#5	20-00		2-#5 BB	167
1400									2	2	#5	20-00		2-#5 BB	83
1401						2			2	2	#5	5-02	H	2-#5 BB COR	43
1402 REF.-(A/S711 & S706)(82 LFT)(H= VARIES)															
1403										32	#6	54-03		#6 @32" VERT	2607
1404										15	#6	54-03		#6 ADDL VERT	1222
1405										32	#6	8-04	H	#6 @32" VERT	401
1406										15	#6	8-04	H	#6 ADDL VERT	188
1407										2	#6	16-00		2-#6 LINTEL	48
1408										26	#3	3-08	L	#3 @8" STIRR	36
1409										2	#6	14-00		2-#6 LINTEL	42
1410										30	#3	3-08	L	#3 @8" STIRR	41
1411						5			2	2	#5	20-00		2-#5 BB	417
1412									5	2	#5	20-00		2-#5 BB	209
1413						3			2	2	#5	5-02	H	2-#5 BB COR	65
1414 REF.-(D/S713 & S706)(230 LFT)(H= VARIES)															
1415										90	#6	62-06		#6 @32" VERT	8449
1416										55	#6	62-06		#6 ADDL VERT	5163
1417										2	#6	14-00		2-#6 LINTEL	42
1418										24	#3	3-08	L	#3 @8" STIRR	33
1419									7	2	#5	8-00		2-#5 LINTEL	117
1420									7	13	#3	3-08	L	#3 @8" STIRR	125
1421									3	2	#6	8-00		2-#6 LINTEL	72
1422						14			2	2	#5	20-00		2-#5 BB	1168
1423						8			2	2	#5	5-02	H	2-#5 BB COR	172
1424 REF.-(E/S713 & S706)(263 LFT)(H= VARIES)															
1425										120	#6	8-04	H	#6 @32" VERT	1502
1426									16	2	#5	20-00		2-#5 BB	668

Bid Date -

** ESTIMATING BAR LIST **

LINE	LA	EP	A/D	STRUCTURE	MULT	REQ	CODE	+	X	QTY	SZ/GR	LENGTH	B	COMMENT	LINE LB
1427									4	2	#5	5-02	H	2-#5 BB COR	43
1428															
1429				>UPPER LEVEL										UPPER LEVEL	
1430														MARK =IB-1	
1431														REF.-(S716 & S708)(113 LFT)	
1432						4			2	6	#9	40-00		6-#9 T&B	6528
1433						4			2	2	#5	40-00		#5 @12" MID EF	668
1434										172	#3	9-04	L	#3 @8" STIRR	604
1435														MARK =IB-2	
1436														REF.-(S716 & S708)(66 LFT)	
1437						2			2	6	#9	40-00		6-#9 T&B	3264
1438						2			2	2	#5	40-00		#5 @12" MID EF	334
1439										105	#3	9-04	L	#3 @8" STIRR	368
1440									2	6	#9	12-00	H	6-#9 COR T&B	490
1441									2	2	#5	6-00	H	#5 @12" COR	25
1442														MARK =IB-3	
1443														REF.-(S716 & S708)(10 LFT)	
1444									2	6	#9	15-00		6-#9 T&B	612
1445									2	2	#5	15-00		#5 @12" MID EF	63
1446										18	#3	9-04	L	#3 @8" STIRR	63
1447														MARK =IB-4	
1448														REF.-(S716 & S707)(81 LFT)	
1449						3			2	6	#9	40-00		6-#9 T&B	4896
1450						3			2	2	#5	40-00		#5 @12" MID EF	501
1451										128	#3	9-04	L	#3 @8" STIRR	449
1452									2	6	#9	12-00	H	6-#9 COR T&B	490
1453									2	2	#5	6-00	H	#5 @12" COR	25
1454														MARK =IB-5	
1455														REF.-(S716 & S707)(40 LFT)	
1456									2	6	#9	40-00		6-#9 T&B	1632
1457									2	6	#9	20-00		6-#9 T&B	816

Bid Date -

** ESTIMATING BAR LIST **

LINE	LA	EP	A/D	STRUCTURE	MULT	REQ	CODE	+	X	QTY	SZ/GR	LENGTH	B	COMMENT	LINE LB
1458									2	2	#5	40-00		#5 @12" MID EF	167
1459									2	2	#5	15-00		#5 @12" MID EF	63
1460										62	#3	9-04	L	#3 @8" STIRR	218
1461	MARK =IB-6														
1462	REF.-(S716 & S707)(64 LFT)														
1463						2			2	6	#9	40-00		6-#9 T&B	3264
1464						2			2	2	#5	40-00		#5 @12" MID EF	334
1465										100	#3	9-04	L	#3 @8" STIRR	351
1466						2			2	6	#9	12-00	H	6-#9 COR T&B	979
1467						2			2	2	#5	6-00	H	#5 @12" COR	50
1468	MARK =IB-7														
1469	REF.-(S716 & S707)(10 LFT)														
1470									2	6	#9	15-00		6-#9 T&B	612
1471									2	2	#5	15-00		#5 @12" MID EF	63
1472										18	#3	9-04	L	#3 @8" STIRR	63
1473															
1474	MARK =RB-1														
1475	REF.-(S716 & S707)(128 LFT)														
1476						4			2	4	#9	40-00		4-#9 T&B	4352
1477						4			2	2	#5	40-00		#5 @12" MID EF	668
1478										195	#4	9-04	L	#4 @8" STIRR	1216
1479						4			2	4	#9	12-00	H	4-#9 COR T&B	1306
1480						4			2	2	#5	6-00	H	#5 @12" COR	100
1481	MARK =RB-2														
1482	REF.-(S716 & S707)(20 LFT)														
1483									2	4	#9	25-00		4-#9 T&B	680
1484									2	2	#5	25-00		#5 @12" MID EF	104
1485										32	#4	9-04	L	#4 @8" STIRR	200
1486	MARK =RB-3														
1487	REF.-(S716 & S707)(120 LFT)														
1488						4			2	4	#9	40-00		4-#9 T&B	4352

Bid Date -

** ESTIMATING BAR LIST **

LINE	LA	EP	A/D	STRUCTURE	MULT	REQ	CODE	+	X	QTY	SZ/GR	LENGTH	B	COMMENT	LINE LB
1489						4			2	2	#5	40-00		#5 @12" MID EF	668
1490										182	#4	9-04	L	#4 @8" STIRR	1135
1491						2			2	4	#9	12-00	H	4-#9 COR T&B	653
1492						2			2	2	#5	6-00	H	#5 @12" COR	50
1493 MARK =RB-4															
1494 REF.-(S716 & S707)(418 LFT)															
1495						13			2	4	#9	40-00		4-#9 T&B	14144
1496						12			2	2	#5	40-00		#5 @12" MID EF	2003
1497										630	#4	9-04	L	#4 @8" STIRR	3928
1498						16			2	4	#9	12-00	H	4-#9 COR T&B	5222
1499						16			2	2	#5	6-00	H	#5 @12" COR	401
1500 MARK =RB-5															
1501 REF.-(S716 & S707)(120 LFT)															
1502						4			2	4	#9	40-00		4-#9 T&B	4352
1503						4			2	2	#5	40-00		#5 @12" MID EF	668
1504										182	#4	9-04	L	#4 @8" STIRR	1135
1505						4			2	4	#9	12-00	H	4-#9 COR T&B	1306
1506						4			2	2	#5	6-00	H	#5 @12" COR	100
1507 MARK =RB-6															
1508 REF.-(S716 & S708)(608 LFT)															
1509						19			2	6	#9	40-00		6-#9 T&B	31008
1510						18			2	3	#5	40-00		#5 @12" MID EF	4506
1511										915	#4	9-04	L	#4 @8" STIRR	5705
1512						28			2	6	#9	12-00	H	6-#9 COR T&B	13709
1513						28			2	3	#5	6-00	H	#5 @12" COR	1051
1514 MARK =RB-7															
1515 REF.-(S716 & S708)(374 LFT)															
1516						12			2	6	#9	40-00		6-#9 T&B	19584
1517						11			2	3	#5	40-00		#5 @12" MID EF	2754
1518										565	#4	9-04	L	#4 @8" STIRR	3523
1519															

Bid Date -

** ESTIMATING BAR LIST **

LINE	LA	EP	A/D	STRUCTURE	MULT	REQ	CODE	+	X	QTY	SZ/GR	LENGTH	B	COMMENT	LINE LB
1520				CF NO.2										CHEMICAL FACILITY NO.2 (S750)	
1521				>CONC. SLAB										CONCRETE SLAB	
1522				REF. SECTION(E/S752) (40 SQ.FT)											
1523										5	#4	40-00		#4 @8" EW BOT	134
1524										3	#4	40-00		#4 @8" EW TOP	80
1525									3	6	#4	2-06	L	#4 @8" BENT	30
1526									3	1	#4	4-00		1-#4 NOSING	8
1527				REF. SECTION(F/S752) (2-LOC.)											
1528						2			2	12	#5	2-06		#5 @8" D&E EF	125
1529						2			2	12	#5	3-00		#5 @8" VERT EF	150
1530						2			2	3	#5	8-00		#5 @8" HOR EF	100
1531						2			4	6	#5	4-00		#5 @8" EW T&B	200
1532						2				2	#4	5-08	L	#4 STANDEE	15
1533															
1534				EQUIPMENT PAD											
1535				REF. SHEET(S-003-0508/SD3)											
1536				AREA = 50 SQ.FT											
1537									2	7	#5	40-00		#5 @8" EW T&B	584
1538										5	#4	6-00	L	#4 @48" STANDEE	20
1539				REF. SHEET(S-003-0504/SD2)											
1540				AREA = 205 SQ.FT											
1541										14	#4	40-00		#4 @12" EW	374
1542										80	#5	1-00		#5 @12" D&E	83
1543															
1544				>CONC. WALL										CONCRETE WALL	
1545				REF. SECTION(C/S752) (H=3'-0") (30 LFT)											
1546									2	32	#5	2-06		#5 @12" D&E EF	167
1547									2	32	#5	3-00		#5 @12" VERT EF	200
1548									2	4	#5	30-00		#5 @12" HOR EF	250
1549									2	4	#5	3-06		#5 @12" D&E EF	29
1550										14	#5	5-08		#5 @32" CMU DWL	83

Bid Date -

** ESTIMATING BAR LIST **

LINE	LA	EP	A/D	STRUCTURE	MULT	REQ	CODE	+	X	QTY	SZ/GR	LENGTH	B	COMMENT	LINE LB
1582									2	6	#5	5-00		#5 @8" LW T&B	63
1583									2	8	#5	4-00		#5 @8" SW T&B	67
1584										4	#4	6-04	L	#4 STANDEE	17
1585															
1586				MAINTANANCE										MAINTANANCE WHAEHOUSE (S980)	
1587				REF. SECTION(A/S983) (384 LFT)											
1588									11	3	#5	40-00		#5 @8" CONT	1377
1589									15	3	#5	6-00	H	#5 @8" COR	282
1590										580	#5	5-06	H	#5 @8" BENT	3327
1591															
1592				12" THICK SLAB											
1593				AREA = 3732 SQ.FT											
1594									2	315	#5	40-00		#5 @8" EW T&B	26284
1595										240	#4	5-08	L	#4 @48" STANDEE	908
1596										154	#6	6-02	H	#6 @48" CMU DWL	1426
1597										43	#5	4-08	H	#5 @48" CMU DWL	209
1598															
1599				EQUIPMENT PAD											
1600				REF. SHEET(S-003-0504/SD2)											
1601				AREA = 8 SQ.FT											
1602										1	#4	40-00		#4 @12" EW	27
1603										14	#5	1-00		#5 @12" D&E	15
1604															
1605				>CMU WALL										CMU WALL	
1606				REF. SECTION(B/A986) (H=22'-8") (209 LFT)											
1607										36	#6	30-06		#6 @48" VERT	1649
1608										70	#6	30-06		#6 ADD'L VERT	3207
1609										36	#5	7-04		#5 @48" VERT	275
1610										70	#5	7-04		#5 ADD'L VERT	535
1611						2			12	2	#5	20-00		2-#5 BB	1001
1612						2			4	2	#5	5-04	H	2-#5 BB COR	89

Bid Date -

** ESTIMATING BAR LIST **

LINE	LA	EP	A/D	STRUCTURE	MULT	REQ	CODE	+	X	QTY	SZ/GR	LENGTH	B	COMMENT	LINE LB
1613									2	2	#5	7-04		2-#5 LINTEL	31
1614									2	2	#6	16-00		2-#6 LINTEL	96
1615									2	4	#5	16-00		4-#5 LINTEL ADD'L	134
1616									2	18	#3	8-00	L	#3 @8" STIRR	108
1617									9	6	#5	8-08		6-#5 LINTEL	488
1618									9	8	#3	6-08	L	#3 @8" STIRR	180
1619									9	2	#5	8-08		2-#5 SILL	163
1620									2	2	#5	8-00		2-#5 LINTEL	33
1621									2	2	#5	8-00		2-#5 SILL	33
1622 REF. SECTION(A/A985) (H=17'-4") (93 LFT)															
1623										16	#6	16-10		#6 @48" VERT	405
1624										32	#6	16-10		#6 ADD'L VERT	809
1625										16	#5	7-04		#5 @48" VERT	122
1626										32	#5	7-04		#5 ADD'L VERT	245
1627						2			6	2	#5	20-00		2-#5 BB	501
1628						2			4	2	#5	5-04	H	2-#5 BB COR	89
1629									5	2	#5	7-04		2-#5 LINTEL	76
1630									4	2	#5	7-04		2-#5 SILL	61
1631										2	#5	10-04		2-#5 LINTEL	22
1632										2	#5	10-04		2-#5 ADD'L LINTEL	22
1633										10	#3	2-08	L	#3 @8" STIRR	10
1634 REF. SECTION(A/A985) (H=12'-8") (93 LFT)															
1635										20	#5	18-00		#5 @48" VERT	375
1636										23	#5	18-00		#5 ADD'L VERT	432
1637									6	2	#5	20-00		2-#5 BB	250
1638									16	2	#5	5-04	H	2-#5 BB COR	178
1639									2	2	#5	7-04		2-#5 LINTEL	31
1640															
1641															

Bid Date -

**** TOTALS PAGE (LBS) ****

WFF FLOW	STRUCTURE TOTAL		STRAIGHT		LIGHT BENT		HEAVY BENT		STOCK/MILL	
SIZE	%	Weight	%	Weight	%	Weight	%	Weight	%	Weight
#4 Gr 60	100	532			100	532				
#5 Gr 60	100	3,310	76	2,503			24	807		
#6 Gr 60	100	17,663	78	13,738			22	3,925		
#7 Gr 60	100	13,753	58	8,001			42	5,752		
#8 Gr 60	100	320	100	320						
Average Lbs per Linear Feet = 1.5758					Average Rebar Size = 6.28					
Total 17.8 Tons	100	35,578	69	24,562	1	532	29	10,484		

WFF FLOW	SubStructure		STRAIGHT		LIGHT BENT		HEAVY BENT		STOCK/MILL		
>CONC. SLAB	SIZE	%	Weight	%	Weight	%	Weight	%	Weight	%	Weight
#4 Gr 60	100	255			100	255					
#5 Gr 60	100	2,503	100	2,503							
#7 Gr 60	100	13,524	57	7,772			43	5,752			
Average Lbs per Linear Feet = 1.7325					Average Rebar Size = 6.65						
Total 8.2 Tons	100	16,282	63	10,275	2	255	35	5,752			

WFF FLOW	SubStructure		STRAIGHT		LIGHT BENT		HEAVY BENT		STOCK/MILL		
>CONC. WALL	SIZE	%	Weight	%	Weight	%	Weight	%	Weight	%	Weight
#5 Gr 60	100	807					100	807			
#6 Gr 60	100	17,663	78	13,738			22	3,925			
Average Lbs per Linear Feet = 1.4737					Average Rebar Size = 5.96						
Total 9.3 Tons	100	18,470	74	13,738			26	4,732			

Bid Date -

**** TOTALS PAGE (LBS) ****

WFF FLOW
 >CONC. BEAM

SIZE	%	Weight	%	Weight	%	Weight	%	Weight	%	Weight
#4 Gr 60	100	277			100	277				
#7 Gr 60	100	229	100	229						
#8 Gr 60	100	320	100	320						
Average Lbs per Linear Feet = 1.2775					Average Rebar Size = 6.38					
Total .5 Tons	100	826	66	549	34	277				

PRE-CLEARWELSTRUCTURE TOTAL

SIZE	%	Weight	%	Weight	%	Weight	%	Weight	%	Weight
#4 Gr 60	100	357			100	357				
#5 Gr 60	100	3,174	84	2,670			16	504		
#6 Gr 60	100	14,260	83	11,807			17	2,453		
#7 Gr 60	100	12,316	64	7,873			36	4,443		
#8 Gr 60	100	320	100	320						
Average Lbs per Linear Feet = 1.5833					Average Rebar Size = 6.30					
Total 15.3 Tons	100	30,427	75	22,670	1	357	24	7,400		

PRE-CLEARWELL
 >CONC. SLAB

SIZE	%	Weight	%	Weight	%	Weight	%	Weight	%	Weight
#4 Gr 60	100	230			100	230				
#5 Gr 60	100	2,670	100	2,670						
#7 Gr 60	100	12,316	64	7,873			36	4,443		
Average Lbs per Linear Feet = 1.7040					Average Rebar Size = 6.60					
Total 7.7 Tons	100	15,216	69	10,543	2	230	29	4,443		

Bid Date -

**** TOTALS PAGE (LBS) ****

PRE-CLEARWELL
 >CONC. WALL ---- SubStructure ---- ----- STRAIGHT ----- LIGHT BENT ----- HEAVY BENT ----- STOCK/MILL -----

SIZE	%	Weight	%	Weight	%	Weight	%	Weight	%	Weight
#5 Gr 60	100	504					100	504		
#6 Gr 60	100	14,260	83	11,807			17	2,453		
Average Lbs per Linear Feet = 1.4798					Average Rebar Size = 5.97					
Total 7.4 Tons	100	14,764	80	11,807			20	2,957		

PRE-CLEARWELL
 >CONC. BEAM ---- SubStructure ---- ----- STRAIGHT ----- LIGHT BENT ----- HEAVY BENT ----- STOCK/MILL -----

SIZE	%	Weight	%	Weight	%	Weight	%	Weight	%	Weight
#4 Gr 60	100	127			100	127				
#8 Gr 60	100	320	100	320						
Average Lbs per Linear Feet = 1.4421					Average Rebar Size = 6.86					
Total .3 Tons	100	447	72	320	28	127				

FINISHED WCV STRUCTURE TOTAL ----- STRAIGHT ----- LIGHT BENT ----- HEAVY BENT ----- STOCK/MILL -----

SIZE	%	Weight	%	Weight	%	Weight	%	Weight	%	Weight
#4 Gr 60	100	254			100	254				
#5 Gr 60	100	1,989	78	1,556			22	433		
#6 Gr 60	100	12,780	74	9,405			26	3,375		
Average Lbs per Linear Feet = 1.3915					Average Rebar Size = 5.83					
Total 7.6 Tons	100	15,023	73	10,961	2	254	25	3,808		

Bid Date -

**** TOTALS PAGE (LBS) ****

FINISHED WCV
 >CONC. SLAB

SIZE	%	Weight	%	Weight	%	Weight	%	Weight	%	Weight
#4 Gr 60	100	107			100	107				
#5 Gr 60	100	1,418	100	1,418						
#6 Gr 60	100	3,113	69	2,163			31	950		
Average Lbs per Linear Feet = 1.2911					Average Rebar Size = 5.65					
Total 2.4 Tons	100	4,638	77	3,581	2	107	20	950		

FINISHED WCV
 >CONC. WALL

SIZE	%	Weight	%	Weight	%	Weight	%	Weight	%	Weight
#4 Gr 60	100	67			100	67				
#5 Gr 60	100	571	24	138			76	433		
#6 Gr 60	100	9,550	75	7,125			25	2,425		
Average Lbs per Linear Feet = 1.4542					Average Rebar Size = 5.93					
Total 5.1 Tons	100	10,188	71	7,263	1	67	28	2,858		

FINISHED WCV
 >CONC. BEAM

SIZE	%	Weight	%	Weight	%	Weight	%	Weight	%	Weight
#4 Gr 60	100	80			100	80				
#6 Gr 60	100	117	100	117						
Average Lbs per Linear Feet = .9967					Average Rebar Size = 5.19					
Total .1 Tons	100	197	59	117	41	80				

Bid Date -

**** TOTALS PAGE (LBS) ****

ADMIN. BLDG. STRUCTURE TOTAL		----- STRAIGHT -----		LIGHT BENT -----		HEAVY BENT -----		STOCK/MILL -----		
SIZE	%	Weight	%	Weight	%	Weight	%	Weight	%	Weight
#3 Gr 60	100	95			100	95				
#4 Gr 60	100	7,516		5	100	7,511				
#5 Gr 60	100	9,613	66	6,327			17	1,597	18	1,689
#6 Gr 60	100	51,575	90	46,243			10	5,332		
#8 Gr 60	100	24,009	62	14,867			38	9,142		
		Average Lbs per Linear Feet = 1.4490				Average Rebar Size = 6.25				
Total 46.5 Tons	100	92,808	73	67,442	8	7,606	17	16,071	2	1,689

ADMIN. BLDG. >CONC. SLAB		---- SubStructure ----		----- STRAIGHT -----		LIGHT BENT -----		HEAVY BENT -----		STOCK/MILL -----	
SIZE	%	Weight	%	Weight	%	Weight	%	Weight	%	Weight	
#4 Gr 60	100	1,081			100	1,081					
#5 Gr 60	100	2,057	81	1,669			19	388			
#6 Gr 60	100	51,449	90	46,117			10	5,332			
		Average Lbs per Linear Feet = 1.4424				Average Rebar Size = 5.92					
Total 27.3 Tons	100	54,587	88	47,786	2	1,081	10	5,720			

ADMIN. BLDG. >CONC. COLUMN		---- SubStructure ----		----- STRAIGHT -----		LIGHT BENT -----		HEAVY BENT -----		STOCK/MILL -----	
SIZE	%	Weight	%	Weight	%	Weight	%	Weight	%	Weight	
#4 Gr 60	100	2,442		5	100	2,437					
#6 Gr 60	100	126	100	126							
#8 Gr 60	100	9,142					100	9,142			
		Average Lbs per Linear Feet = 1.6347				Average Rebar Size = 7.14					
Total 5.9 Tons	100	11,710	1	131	21	2,437	78	9,142			

Bid Date -

**** TOTALS PAGE (LBS) ****

ADMIN. BLDG. >CONC. BEAM										
SIZE	%	Weight	%	Weight	%	Weight	%	Weight	%	Weight
#3 Gr 60	100	85			100	85				
#4 Gr 60	100	3,993			100	3,993				
#5 Gr 60	100	4,107	75	3,090			24	975	1	42
#8 Gr 60	100	14,867	100	14,867						
Average Lbs per Linear Feet = 1.4674					Average Rebar Size = 6.75					
Total 11.6 Tons	100	23,052	78	17,957	18	4,078	4	975		42

ADMIN. BLDG. >CMU WALL										
SIZE	%	Weight	%	Weight	%	Weight	%	Weight	%	Weight
#3 Gr 60	100	10			100	10				
#5 Gr 60	100	3,449	45	1,568			7	234	48	1,647
Average Lbs per Linear Feet = 1.0377					Average Rebar Size = 4.99					
Total 1.8 Tons	100	3,459	45	1,568		10	7	234	48	1,647

FWPS-1 ELEC. STRUCTURE TOTAL										
SIZE	%	Weight	%	Weight	%	Weight	%	Weight	%	Weight
#3 Gr 60	100	10			100	10				
#4 Gr 60	100	614			78	481			22	133
#5 Gr 60	100	5,479	71	3,909			15	819	14	751
#6 Gr 60	100	16,641	89	14,779			11	1,862		
Average Lbs per Linear Feet = 1.3163					Average Rebar Size = 5.70					
Total 11.4 Tons	100	22,744	82	18,688	2	491	12	2,681	4	884

Bid Date -

**** TOTALS PAGE (LBS) ****

FWPS-1 ELEC. >CONC. SLAB										
---- SubStructure ----			----- STRAIGHT -----		----- LIGHT BENT -----		----- HEAVY BENT -----		----- STOCK/MILL -----	
SIZE	%	Weight	%	Weight	%	Weight	%	Weight	%	Weight
#4 Gr 60	100	402			100	402				
#5 Gr 60	100	2,154	77	1,669			23	485		
#6 Gr 60	100	16,641	89	14,779			11	1,862		
Average Lbs per Linear Feet = 1.3965					Average Rebar Size = 5.85					
Total 9.6 Tons	100	19,197	86	16,448	2	402	12	2,347		

FWPS-1 ELEC. >CMU WALL										
---- SubStructure ----			----- STRAIGHT -----		----- LIGHT BENT -----		----- HEAVY BENT -----		----- STOCK/MILL -----	
SIZE	%	Weight	%	Weight	%	Weight	%	Weight	%	Weight
#3 Gr 60	100	10			100	10				
#5 Gr 60	100	3,325	67	2,240			10	334	23	751
Average Lbs per Linear Feet = 1.0375					Average Rebar Size = 4.99					
Total 1.7 Tons	100	3,335	67	2,240		10	10	334	23	751

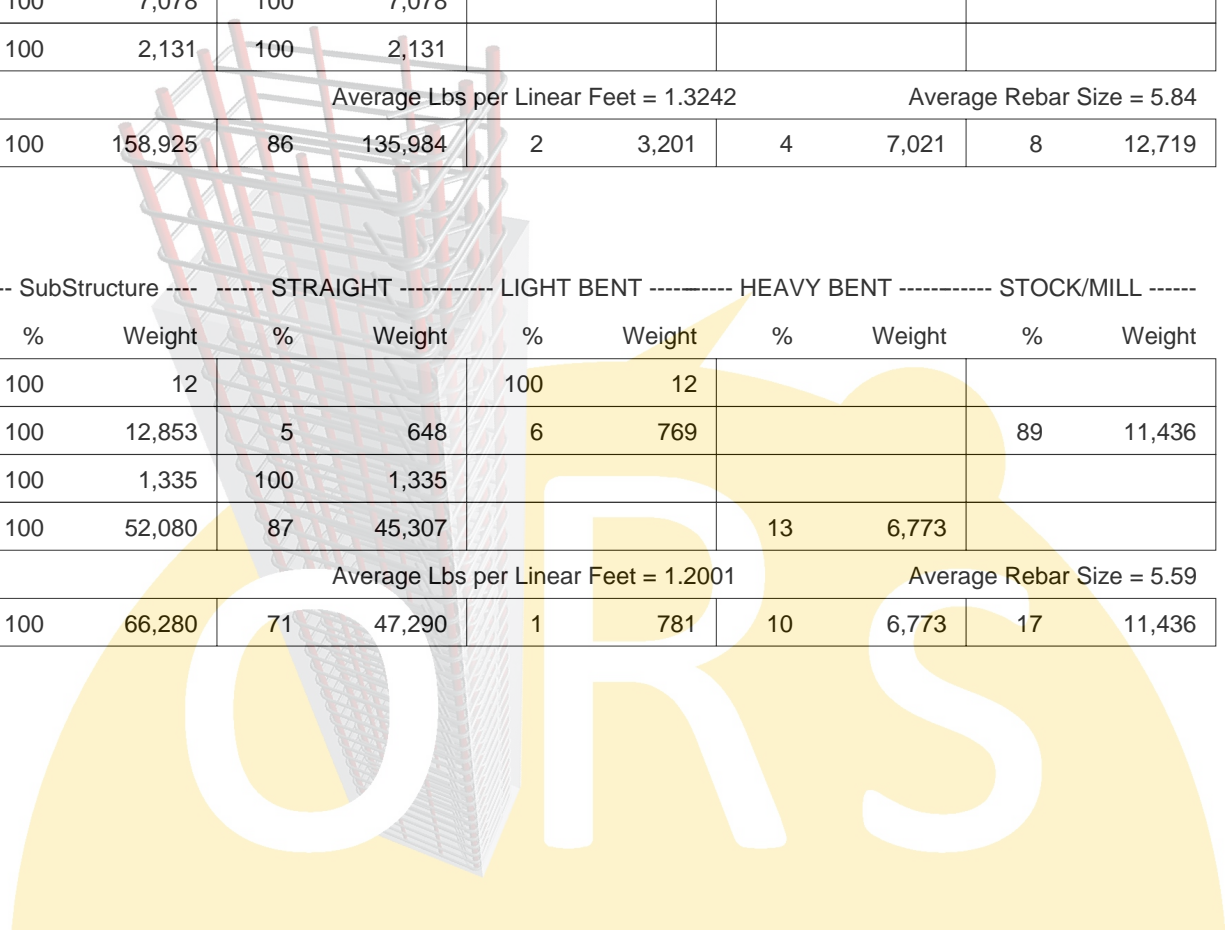
FWPS-1 ELEC. >UPPER LEVEL										
---- SubStructure ----			----- STRAIGHT -----		----- LIGHT BENT -----		----- HEAVY BENT -----		----- STOCK/MILL -----	
SIZE	%	Weight	%	Weight	%	Weight	%	Weight	%	Weight
#4 Gr 60	100	212			37	79			63	133
Average Lbs per Linear Feet = .6680					Average Rebar Size = 4.00					
Total .2 Tons	100	212			37	79			63	133

Bid Date -

**** TOTALS PAGE (LBS) ****

CTF NO.1	STRUCTURE TOTAL		STRAIGHT		LIGHT BENT		HEAVY BENT		STOCK/MILL	
SIZE	%	Weight	%	Weight	%	Weight	%	Weight	%	Weight
#3 Gr 60	100	156			100	156				
#4 Gr 60	100	18,674	16	2,974	16	2,981			68	12,719
#5 Gr 60	100	1,426	98	1,391			2	35		
#6 Gr 60	100	129,460	95	122,410		64	5	6,986		
#7 Gr 60	100	7,078	100	7,078						
#9 Gr 60	100	2,131	100	2,131						
Average Lbs per Linear Feet = 1.3242					Average Rebar Size = 5.84					
Total 79.5 Tons	100	158,925	86	135,984	2	3,201	4	7,021	8	12,719

CTF NO.1	SubStructure		STRAIGHT		LIGHT BENT		HEAVY BENT		STOCK/MILL	
>CONC. SLAB	%	Weight	%	Weight	%	Weight	%	Weight	%	Weight
#3 Gr 60	100	12			100	12				
#4 Gr 60	100	12,853	5	648	6	769			89	11,436
#5 Gr 60	100	1,335	100	1,335						
#6 Gr 60	100	52,080	87	45,307			13	6,773		
Average Lbs per Linear Feet = 1.2001					Average Rebar Size = 5.59					
Total 33.2 Tons	100	66,280	71	47,290	1	781	10	6,773	17	11,436



Bid Date -

** TOTALS PAGE (LBS) **

CTF NO.1
 >CONC. WALL

SIZE	%	Weight	%	Weight	%	Weight	%	Weight	%	Weight
#3 Gr 60	100	144			100	144				
#4 Gr 60	100	5,821	40	2,326	38	2,212			22	1,283
#5 Gr 60	100	91	62	56			38	35		
#6 Gr 60	100	77,380	100	77,103		64		213		
#7 Gr 60	100	7,078	100	7,078						
#9 Gr 60	100	2,131	100	2,131						
Average Lbs per Linear Feet = 1.4299					Average Rebar Size = 6.01					
Total 46.4 Tons	100	92,645	96	88,694	3	2,420		248	1	1,283

CTF NO.2

STRUCTURE TOTAL	%	Weight	%	Weight	%	Weight	%	Weight	%	Weight
#3 Gr 60	100	1,853			97	1,793			3	60
#4 Gr 60	100	67,880		71	66	44,777			34	23,032
#5 Gr 60	100	96,553	88	85,320			11	10,357	1	876
#6 Gr 60	100	131,156	46	60,009			54	71,147		
#7 Gr 60	100	559,833	83	465,910			17	93,923		
#8 Gr 60	100	819,249	81	662,060			19	157,189		
#9 Gr 60	100	410,102	71	289,707			29	120,395		
#10 Gr 60	100	239,540	90	216,183			10	23,357		
Average Lbs per Linear Feet = 2.2293					Average Rebar Size = 7.78					
Total 1,163.1 Tons	100	2,326,166	76	1,779,260	2	46,570	20	476,368	1	23,968

Bid Date -

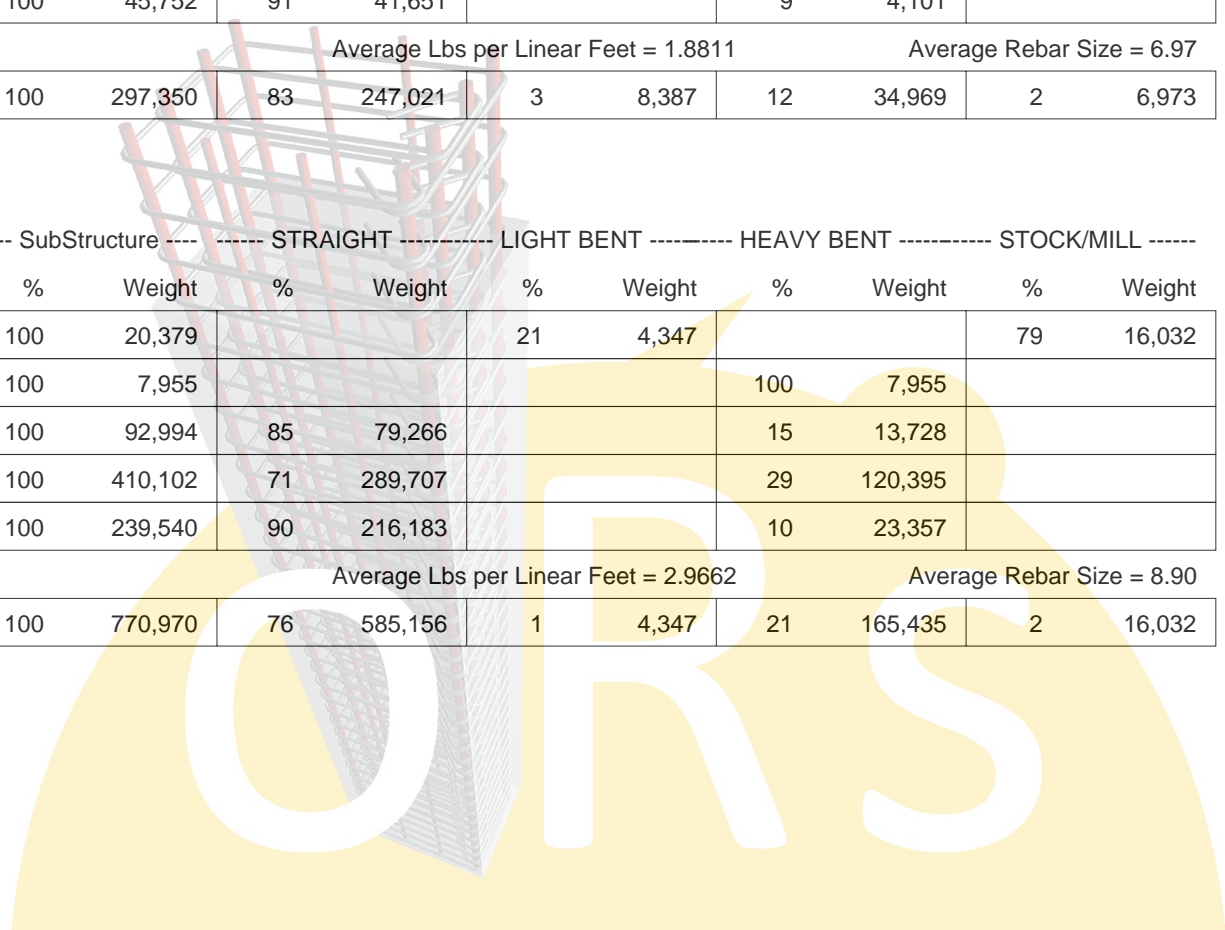
** TOTALS PAGE (LBS) **

CTF NO.2
 >RAPID MIX

	---- SubStructure ----		----- STRAIGHT -----		----- LIGHT BENT -----		----- HEAVY BENT -----		----- STOCK/MILL -----	
SIZE	%	Weight	%	Weight	%	Weight	%	Weight	%	Weight
#3 Gr 60	100	718			100	718				
#4 Gr 60	100	14,642			52	7,669			48	6,973
#5 Gr 60	100	3,270	87	2,845			13	425		
#7 Gr 60	100	232,968	87	202,525			13	30,443		
#8 Gr 60	100	45,752	91	41,651			9	4,101		
Average Lbs per Linear Feet = 1.8811					Average Rebar Size = 6.97					
Total 148.7 Tons	100	297,350	83	247,021	3	8,387	12	34,969	2	6,973

CTF NO.2
 >SEDIMENTATIO

	---- SubStructure ----		----- STRAIGHT -----		----- LIGHT BENT -----		----- HEAVY BENT -----		----- STOCK/MILL -----	
SIZE	%	Weight	%	Weight	%	Weight	%	Weight	%	Weight
#4 Gr 60	100	20,379			21	4,347			79	16,032
#5 Gr 60	100	7,955					100	7,955		
#7 Gr 60	100	92,994	85	79,266			15	13,728		
#9 Gr 60	100	410,102	71	289,707			29	120,395		
#10 Gr 60	100	239,540	90	216,183			10	23,357		
Average Lbs per Linear Feet = 2.9662					Average Rebar Size = 8.90					
Total 385.5 Tons	100	770,970	76	585,156	1	4,347	21	165,435	2	16,032



Bid Date -

** TOTALS PAGE (LBS) **

CTF NO.2
 >PGF-WEST

SIZE	SubStructure	STRAIGHT	LIGHT BENT	HEAVY BENT	STOCK/MILL					
	%	Weight	%	Weight	%	Weight	%	Weight	%	Weight
#4 Gr 60	100	24,593		100	24,593					
#5 Gr 60	100	53,887	100	53,887						
#6 Gr 60	100	109,256	40	44,099			60	65,157		
#7 Gr 60	100	151,077	78	117,189			22	33,888		
#8 Gr 60	100	598,668	86	513,955			14	84,713		
Average Lbs per Linear Feet = 2.0409 Average Rebar Size = 7.33										
Total 468.8 Tons	100	937,481	78	729,130	3	24,593	20	183,758		

CTF NO.2
 >PGF-EAST

SIZE	SubStructure	STRAIGHT	LIGHT BENT	HEAVY BENT	STOCK/MILL					
	%	Weight	%	Weight	%	Weight	%	Weight	%	Weight
#3 Gr 60	100	1,135		95	1,075				5	60
#4 Gr 60	100	8,266	1	71	99	8,168				27
#5 Gr 60	100	29,148	93	27,224			6	1,799		125
#6 Gr 60	100	21,900	73	15,910			27	5,990		
#7 Gr 60	100	82,794	81	66,930			19	15,864		
#8 Gr 60	100	174,829	61	106,454			39	68,375		
Average Lbs per Linear Feet = 1.9406 Average Rebar Size = 7.21										
Total 159.1 Tons	100	318,072	68	216,589	3	9,243	29	92,028		212

CTF NO.2
 >CMU WALL

SIZE	SubStructure	STRAIGHT	LIGHT BENT	HEAVY BENT	STOCK/MILL					
	%	Weight	%	Weight	%	Weight	%	Weight	%	Weight
#5 Gr 60	100	2,293	59	1,364			8	178	33	751
Average Lbs per Linear Feet = 1.0430 Average Rebar Size = 5.00										
Total 1.2 Tons	100	2,293	59	1,364			8	178	33	751

Bid Date -

**** TOTALS PAGE (LBS) ****

CTF ELE.BLDG. STRUCTURE TOTAL ----- STRAIGHT ----- LIGHT BENT ----- HEAVY BENT ----- STOCK/MILL -----										
SIZE	%	Weight	%	Weight	%	Weight	%	Weight	%	Weight
#3 Gr 60	100	10			100	10				
#4 Gr 60	100	450			76	343			24	107
#5 Gr 60	100	4,363	68	2,972			18	807	13	584
#6 Gr 60	100	11,927	87	10,334			13	1,593		
Average Lbs per Linear Feet = 1.3061					Average Rebar Size = 5.68					
Total 8.4 Tons	100	16,750	79	13,306	2	353	14	2,400	4	691

CTF ELE.BLDG. >CONC. SLAB ---- SubStructure ---- STRAIGHT ----- LIGHT BENT ----- HEAVY BENT ----- STOCK/MILL -----										
SIZE	%	Weight	%	Weight	%	Weight	%	Weight	%	Weight
#4 Gr 60	100	275			100	275				
#5 Gr 60	100	1,641	71	1,168			29	473		
#6 Gr 60	100	11,927	87	10,334			13	1,593		
Average Lbs per Linear Feet = 1.3947					Average Rebar Size = 5.84					
Total 7.0 Tons	100	13,843	83	11,502	2	275	15	2,066		

CTF ELE.BLDG. >CMU WALL ---- SubStructure ---- STRAIGHT ----- LIGHT BENT ----- HEAVY BENT ----- STOCK/MILL -----										
SIZE	%	Weight	%	Weight	%	Weight	%	Weight	%	Weight
#3 Gr 60	100	10			100	10				
#5 Gr 60	100	2,722	66	1,804			12	334	21	584
Average Lbs per Linear Feet = 1.0363					Average Rebar Size = 4.99					
Total 1.4 Tons	100	2,732	66	1,804		10	12	334	21	584

Bid Date -

**** TOTALS PAGE (LBS) ****

CTF ELE.BLDG.
 >UPPER LEVEL

SIZE	%	Weight	%	Weight	%	Weight	%	Weight	%	Weight
#4 Gr 60	100	175			39	68			61	107
Average Lbs per Linear Feet = .6680					Average Rebar Size = 4.00					
Total .1 Tons	100	175			39	68			61	107

CLEARWELL-2 STRUCTURE TOTAL

SIZE	%	Weight	%	Weight	%	Weight	%	Weight	%	Weight
#3 Gr 60	100	1,613	20	316	43	696			37	601
#4 Gr 60	100	8,671	13		100	8,658				
#5 Gr 60	100	38,527	58	22,486			42	16,041		
#6 Gr 60	100	207,453	82	170,064			18	37,389		
#7 Gr 60	100	4,055	100	4,055						
#8 Gr 60	100	350,075	96	335,557			4	14,518		
#9 Gr 60	100	6,528	100	6,528						
#10 Gr 60	100	802,663	84	674,711			16	127,952		
Average Lbs per Linear Feet = 2.7625					Average Rebar Size = 8.73					
Total 709.8 Tons	100	1,419,585	85	1,213,730	1	9,354	14	195,900		601

CLEARWELL-2
 >CONC. SLAB

SIZE	%	Weight	%	Weight	%	Weight	%	Weight	%	Weight
#5 Gr 60	100	12,579					100	12,579		
#6 Gr 60	100	26,788					100	26,788		
#10 Gr 60	100	802,663	84	674,711			16	127,952		
Average Lbs per Linear Feet = 3.8905					Average Rebar Size = 9.80					
Total 421.1 Tons	100	842,030	80	674,711			20	167,319		

Bid Date -

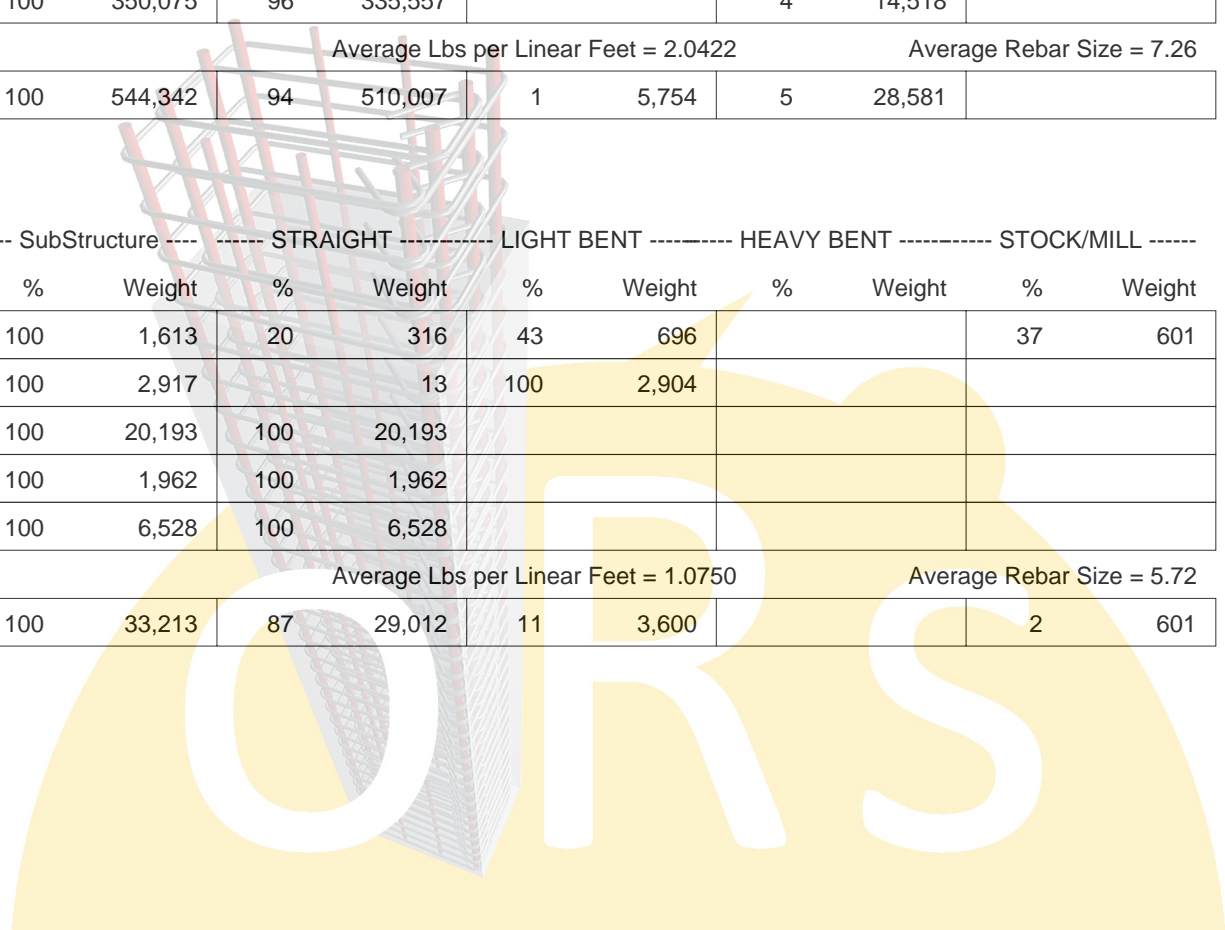
** TOTALS PAGE (LBS) **

CLEARWELL-2
 >CONC. WALL

SIZE	%	Weight	%	Weight	%	Weight	%	Weight	%	Weight
#4 Gr 60	100	5,754			100	5,754				
#5 Gr 60	100	5,755	40	2,293			60	3,462		
#6 Gr 60	100	180,665	94	170,064			6	10,601		
#7 Gr 60	100	2,093	100	2,093						
#8 Gr 60	100	350,075	96	335,557			4	14,518		
Average Lbs per Linear Feet = 2.0422 Average Rebar Size = 7.26										
Total 272.2 Tons	100	544,342	94	510,007	1	5,754	5	28,581		

CLEARWELL-2
 >UPPER LEVEL

SIZE	%	Weight	%	Weight	%	Weight	%	Weight	%	Weight
#3 Gr 60	100	1,613	20	316	43	696			37	601
#4 Gr 60	100	2,917		13	100	2,904				
#5 Gr 60	100	20,193	100	20,193						
#7 Gr 60	100	1,962	100	1,962						
#9 Gr 60	100	6,528	100	6,528						
Average Lbs per Linear Feet = 1.0750 Average Rebar Size = 5.72										
Total 16.7 Tons	100	33,213	87	29,012	11	3,600			2	601

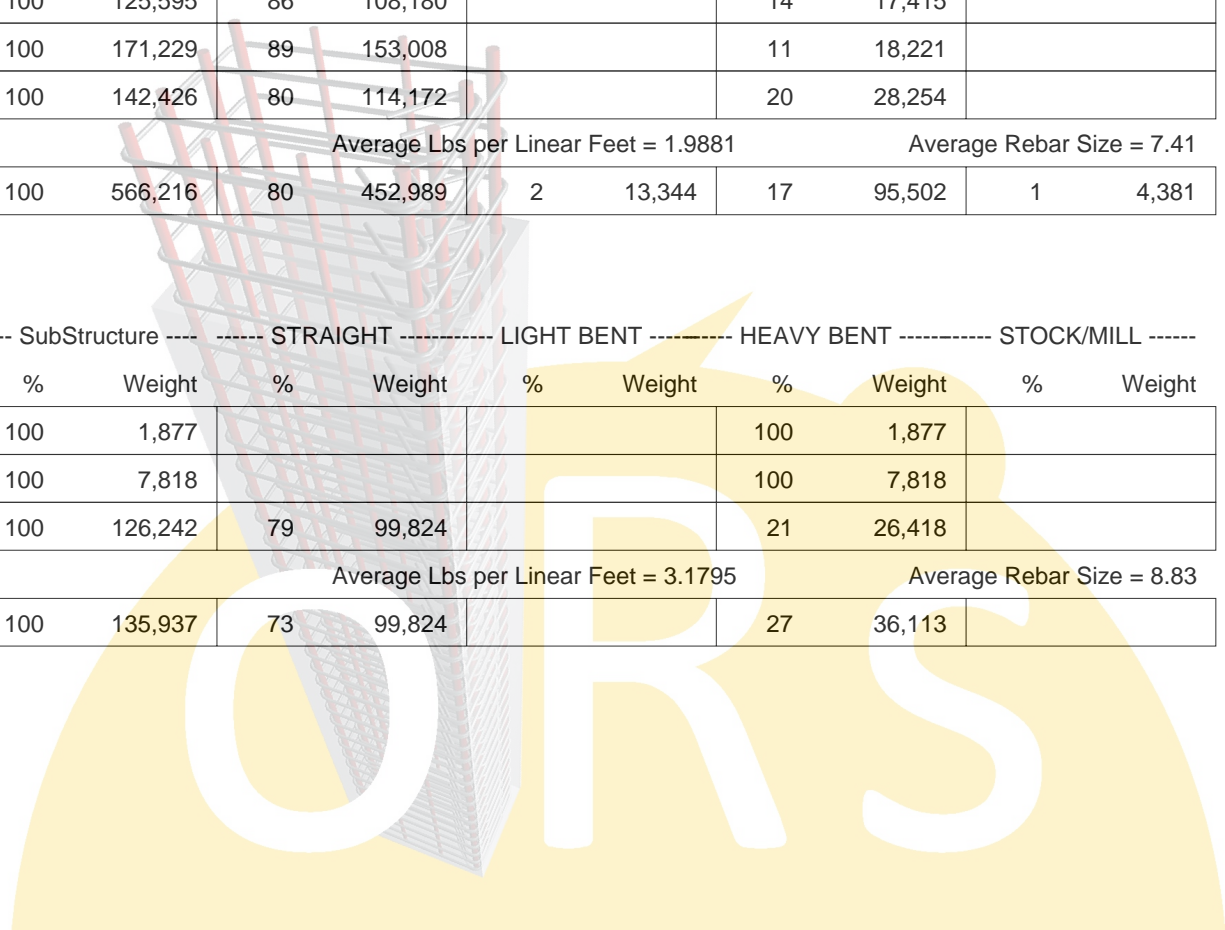


Bid Date -

** TOTALS PAGE (LBS) **

FWPS-2 ELEC. STRUCTURE TOTAL		----- STRAIGHT -----		LIGHT BENT -----		HEAVY BENT -----		STOCK/MILL -----		
SIZE	%	Weight	%	Weight	%	Weight	%	Weight	%	Weight
#3 Gr 60	100	355			100	355				
#4 Gr 60	100	14,993			87	12,989			13	2,004
#5 Gr 60	100	67,022	69	46,364			27	18,281	4	2,377
#6 Gr 60	100	44,596	70	31,265			30	13,331		
#7 Gr 60	100	125,595	86	108,180			14	17,415		
#8 Gr 60	100	171,229	89	153,008			11	18,221		
#9 Gr 60	100	142,426	80	114,172			20	28,254		
		Average Lbs per Linear Feet = 1.9881				Average Rebar Size = 7.41				
Total 283.2 Tons	100	566,216	80	452,989	2	13,344	17	95,502	1	4,381

FWPS-2 ELEC. >MAT FTG		---- SubStructure ----		----- STRAIGHT -----		LIGHT BENT -----		HEAVY BENT -----		STOCK/MILL -----	
SIZE	%	Weight	%	Weight	%	Weight	%	Weight	%	Weight	
#5 Gr 60	100	1,877					100	1,877			
#7 Gr 60	100	7,818					100	7,818			
#9 Gr 60	100	126,242	79	99,824			21	26,418			
		Average Lbs per Linear Feet = 3.1795				Average Rebar Size = 8.83					
Total 68.0 Tons	100	135,937	73	99,824			27	36,113			



Bid Date -

** TOTALS PAGE (LBS) **

FWPS-2 ELEC.
 >CONC.WALL

SIZE	%	Weight	%	Weight	%	Weight	%	Weight	%	Weight
#4 Gr 60	100	2,646			100	2,646				
#5 Gr 60	100	13,841	24	3,254			76	10,587		
#6 Gr 60	100	43,708	69	30,377			31	13,331		
#7 Gr 60	100	13,918	85	11,856			15	2,062		
#8 Gr 60	100	162,765	89	144,544			11	18,221		
Average Lbs per Linear Feet = 2.0760 Average Rebar Size = 7.35										
Total 118.5 Tons	100	236,878	80	190,031	1	2,646	19	44,201		

FWPS-2 ELEC.
 >UPPER LEVEL

SIZE	%	Weight	%	Weight	%	Weight	%	Weight	%	Weight
#3 Gr 60	100	229			100	229				
#4 Gr 60	100	12,347			84	10,343			16	2,004
#5 Gr 60	100	38,381	85	32,554			15	5,661		166
#6 Gr 60	100	840	100	840						
#7 Gr 60	100	103,859	93	96,324			7	7,535		
#8 Gr 60	100	8,464	100	8,464						
#9 Gr 60	100	16,184	89	14,348			11	1,836		
Average Lbs per Linear Feet = 1.5652 Average Rebar Size = 6.59										
Total 90.2 Tons	100	180,304	85	152,530	6	10,572	8	15,032	1	2,170

Bid Date -

**** TOTALS PAGE (LBS) ****

FWPS-2 ELEC.
 >CMU WALL

SIZE	%	Weight	%	Weight	%	Weight	%	Weight	%	Weight
#3 Gr 60	100	126			100	126				
#5 Gr 60	100	12,923	82	10,556			1	156	17	2,211
#6 Gr 60	100	48	100	48						
Average Lbs per Linear Feet = 1.0266					Average Rebar Size = 4.98					
Total 6.6 Tons	100	13,097	81	10,604	1	126	1	156	17	2,211

EFF TANK

STRUCTURE TOTAL	STRAIGHT	LIGHT BENT	HEAVY BENT	STOCK/MILL						
SIZE	%	Weight	%	Weight	%	Weight	%	Weight	%	Weight
#4 Gr 60	100	560	91	507					9	53
#5 Gr 60	100	245	44	107			56	138		
#6 Gr 60	100	12,256	100	12,256						
Average Lbs per Linear Feet = 1.4146					Average Rebar Size = 5.90					
Total 6.6 Tons	100	13,061	95	12,363	4	507	1	138		53

EFF TANK
 >MAT FTG

SubStructure	STRAIGHT	LIGHT BENT	HEAVY BENT	STOCK/MILL						
SIZE	%	Weight	%	Weight	%	Weight	%	Weight	%	Weight
#4 Gr 60	100	400	87	347					13	53
#5 Gr 60	100	73	42	31			58	42		
#6 Gr 60	100	12,256	100	12,256						
Average Lbs per Linear Feet = 1.4418					Average Rebar Size = 5.93					
Total 6.4 Tons	100	12,729	97	12,287	3	347		42		53

Bid Date -

**** TOTALS PAGE (LBS) ****

EFF TANK
 >CONC.PEDESTA---- SubStructure ---- ----- STRAIGHT ----- LIGHT BENT ----- HEAVY BENT ----- STOCK/MILL -----

SIZE	%	Weight	%	Weight	%	Weight	%	Weight	%	Weight
#4 Gr 60	100	160			100	160				
#5 Gr 60	100	172	44	76			56	96		
Average Lbs per Linear Feet = .8209					Average Rebar Size = 4.52					
Total .2 Tons	100	332	23	76	48	160	29	96		

CF NO.1
 STRUCTURE TOTAL ----- STRAIGHT ----- LIGHT BENT ----- HEAVY BENT ----- STOCK/MILL -----

SIZE	%	Weight	%	Weight	%	Weight	%	Weight	%	Weight
#3 Gr 60	100	24,948			100	24,948				
#4 Gr 60	100	26,625		64	86	22,820			14	3,741
#5 Gr 60	100	30,240	52	15,793			32	9,649	16	4,798
#6 Gr 60	100	210,200	62	131,294			38	78,906		
#8 Gr 60	100	465,833	82	380,378			18	85,455		
#9 Gr 60	100	124,251	81	100,096			19	24,155		
Average Lbs per Linear Feet = 1.8144					Average Rebar Size = 7.30					
Total 441.1 Tons	100	882,097	71	627,625	5	47,768	22	198,165	1	8,539

CF NO.1
 >MAT FTG ---- SubStructure ---- ----- STRAIGHT ----- LIGHT BENT ----- HEAVY BENT ----- STOCK/MILL -----

SIZE	%	Weight	%	Weight	%	Weight	%	Weight	%	Weight
#4 Gr 60	100	9,783	1	64	61	5,978			38	3,741
#5 Gr 60	100	4,113	43	1,763			57	2,350		
#6 Gr 60	100	104,149	46	48,184			54	55,965		
#8 Gr 60	100	336,420	86	290,709			14	45,711		
Average Lbs per Linear Feet = 2.1244					Average Rebar Size = 7.43					
Total 227.3 Tons	100	454,465	75	340,720	1	5,978	23	104,026	1	3,741

Bid Date -

** TOTALS PAGE (LBS) **

CF NO.1
 >CONC.WALL

SIZE	%	Weight	%	Weight	%	Weight	%	Weight	%	Weight
#5 Gr 60	100	4,957					100	4,957		
#6 Gr 60	100	67,482	73	48,985			27	18,497		
#8 Gr 60	100	43,267	55	23,923			45	19,344		
Average Lbs per Linear Feet = 1.7562					Average Rebar Size = 6.71					
Total 57.9 Tons	100	115,706	63	72,908			37	42,798		

CF NO.1
 >CONC.COLUMN

SIZE	%	Weight	%	Weight	%	Weight	%	Weight	%	Weight
#3 Gr 60	100	22,226			100	22,226				
#8 Gr 60	100	86,146	76	65,746			24	20,400		
Average Lbs per Linear Feet = 1.1860					Average Rebar Size = 6.97					
Total 54.2 Tons	100	108,372	61	65,746	21	22,226	19	20,400		

CF NO.1
 >CMU WALL

SIZE	%	Weight	%	Weight	%	Weight	%	Weight	%	Weight
#3 Gr 60	100	606			100	606				
#5 Gr 60	100	5,804	8	466			9	540	83	4,798
#6 Gr 60	100	38,569	88	34,125			12	4,444		
Average Lbs per Linear Feet = 1.3690					Average Rebar Size = 5.83					
Total 22.5 Tons	100	44,979	77	34,591	1	606	11	4,984	11	4,798

Bid Date -

**** TOTALS PAGE (LBS) ****

CF NO.1
 >UPPER LEVEL ---- SubStructure ---- ----- STRAIGHT ----- LIGHT BENT ----- HEAVY BENT ----- STOCK/MILL -----

SIZE	%	Weight	%	Weight	%	Weight	%	Weight	%	Weight
#3 Gr 60	100	2,116			100	2,116				
#4 Gr 60	100	16,842			100	16,842				
#5 Gr 60	100	15,366	88	13,564			12	1,802		
#9 Gr 60	100	124,251	81	100,096			19	24,155		
Average Lbs per Linear Feet = 1.9311					Average Rebar Size = 8.00					
Total 79.3 Tons	100	158,575	72	113,660	12	18,958	16	25,957		

CF NO.2
 STRUCTURE TOTAL ----- STRAIGHT ----- LIGHT BENT ----- HEAVY BENT ----- STOCK/MILL -----

SIZE	%	Weight	%	Weight	%	Weight	%	Weight	%	Weight
#4 Gr 60	100	661	1	8	10	65			89	588
#5 Gr 60	100	2,548	97	2,465					3	83
Average Lbs per Linear Feet = .9349					Average Rebar Size = 4.79					
Total 1.7 Tons	100	3,209	77	2,473	2	65			21	671

CF NO.2
 >CONC. SLAB ---- SubStructure ---- ----- STRAIGHT ----- LIGHT BENT ----- HEAVY BENT ----- STOCK/MILL -----

SIZE	%	Weight	%	Weight	%	Weight	%	Weight	%	Weight
#4 Gr 60	100	661	1	8	10	65			89	588
#5 Gr 60	100	1,242	100	1,242						
Average Lbs per Linear Feet = .8728					Average Rebar Size = 4.65					
Total 1.0 Tons	100	1,903	66	1,250	3	65			31	588

Bid Date -

**** TOTALS PAGE (LBS) ****

CF NO.2 >CONC. WALL	---- SubStructure ----	----- STRAIGHT -----		----- LIGHT BENT -----		----- HEAVY BENT -----		----- STOCK/MILL -----		
SIZE	%	Weight	%	Weight	%	Weight	%	Weight	%	Weight
#5 Gr 60	100	729	100	729						
Average Lbs per Linear Feet = 1.0430						Average Rebar Size = 5.00				
Total .4 Tons	100	729	100	729						

CF NO.2 >CMU WALL	---- SubStructure ----	----- STRAIGHT -----		----- LIGHT BENT -----		----- HEAVY BENT -----		----- STOCK/MILL -----		
SIZE	%	Weight	%	Weight	%	Weight	%	Weight	%	Weight
#5 Gr 60	100	577	86	494				14		83
Average Lbs per Linear Feet = 1.0430						Average Rebar Size = 5.00				
Total .3 Tons	100	577	86	494				14		83

GTDB PH-1	STRUCTURE TOTAL	----- STRAIGHT -----		----- LIGHT BENT -----		----- HEAVY BENT -----		----- STOCK/MILL -----		
SIZE	%	Weight	%	Weight	%	Weight	%	Weight	%	Weight
#4 Gr 60	100	2,139	26	558	46	993		27		588
Average Lbs per Linear Feet = .6680						Average Rebar Size = 4.00				
Total 1.1 Tons	100	2,139	26	558	46	993		27		588

GTDB PH-1 >CONC. SLAB	---- SubStructure ----	----- STRAIGHT -----		----- LIGHT BENT -----		----- HEAVY BENT -----		----- STOCK/MILL -----		
SIZE	%	Weight	%	Weight	%	Weight	%	Weight	%	Weight
#4 Gr 60	100	825			29	237		71		588
Average Lbs per Linear Feet = .6680						Average Rebar Size = 4.00				
Total .5 Tons	100	825			29	237		71		588

Bid Date -

**** TOTALS PAGE (LBS) ****

GTDB PH-1
 >CONC. WALL

SIZE	%	Weight	%	Weight	%	Weight	%	Weight	%	Weight
#4 Gr 60	100	1,314	42	558	58	756				
Average Lbs per Linear Feet = .6680						Average Rebar Size = 4.00				
Total .7 Tons	100	1,314	42	558	58	756				

GT NO.1

SIZE	%	Weight	%	Weight	%	Weight	%	Weight	%	Weight
#4 Gr 60	100	17			100	17				
#5 Gr 60	100	130	100	130						
Average Lbs per Linear Feet = .9794						Average Rebar Size = 4.88				
Total .1 Tons	100	147	88	130	12	17				

MAINTANANCE

SIZE	%	Weight	%	Weight	%	Weight	%	Weight	%	Weight
#3 Gr 60	100	298			100	298				
#4 Gr 60	100	935			97	908	3	27		
#5 Gr 60	100	36,680	84	30,754			11	4,174	5	1,752
#6 Gr 60	100	7,592	81	6,166			19	1,426		
Average Lbs per Linear Feet = 1.0729						Average Rebar Size = 5.13				
Total 22.8 Tons	100	45,505	81	36,920	3	1,206	12	5,600	4	1,779

Bid Date -

**** TOTALS PAGE (LBS) ****

MAINTANANCE >CMU WALL										
---- SubStructure ----			----- STRAIGHT -----		----- LIGHT BENT -----		----- HEAVY BENT -----		----- STOCK/MILL -----	
SIZE	%	Weight	%	Weight	%	Weight	%	Weight	%	Weight
#3 Gr 60	100	298			100	298				
#5 Gr 60	100	5,186	59	3,078			7	356	34	1,752
#6 Gr 60	100	6,166	100	6,166						
Average Lbs per Linear Feet = 1.1804					Average Rebar Size = 5.48					
Total 5.9 Tons	100	11,650	79	9,244	3	298	3	356	15	1,752

GRAND TOTALS										
----- TOTAL -----			----- STRAIGHT -----		----- LIGHT BENT -----		----- HEAVY BENT -----		----- STOCK/MILL -----	
SIZE	%	Weight	%	Weight	%	Weight	%	Weight	%	Weight
#3 Gr 60	100	29,338	1	316	97	28,361			2	661
#4 Gr 60	100	150,878	2	3,693	69	104,193			28	42,992
#5 Gr 60	100	301,299	75	224,747			21	63,642	4	12,910
#6 Gr 60	100	867,559	74	639,770		64	26	227,725		
#7 Gr 60	100	722,630	83	601,097			17	121,533		
#8 Gr 60	100	1,831,035	84	1,546,510			16	284,525		
#9 Gr 60	100	685,438	75	512,634			25	172,804		
#10 Gr 60	100	1,042,203	85	890,894			15	151,309		
Average Lbs per Linear Feet = 2.1219					Average Rebar Size = 7.76					
Total 2,815.2 Tons	100	5,630,380	78	4,419,661	2	132,618	18	1,021,538	1	56,563